

WAAS CH 82405 W19A	APP CRS 184°	Rwy Idg TDZE Apt Elev	6501 769 772
--	------------------------	-----------------------------	---

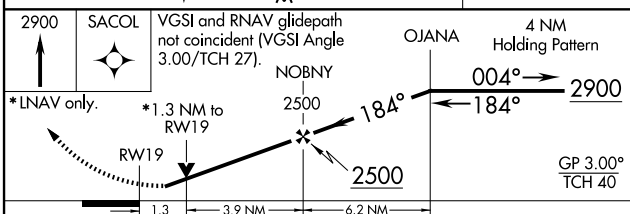
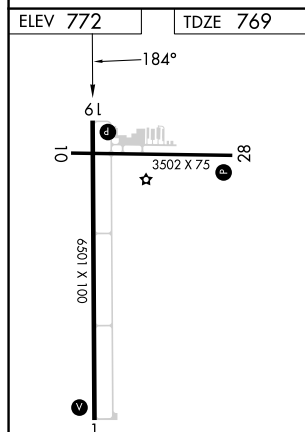
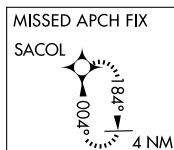
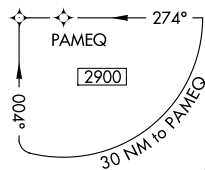
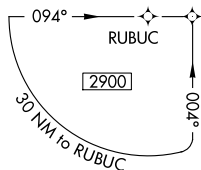
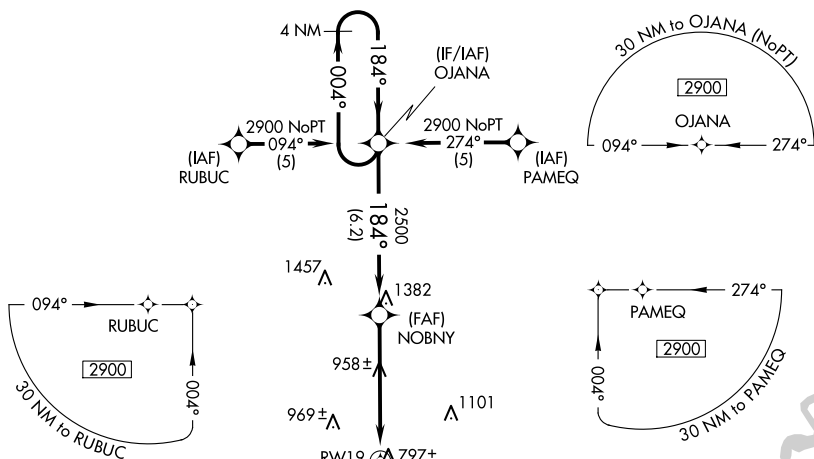
RNAV (GPS) RWY 19

FREMONT MUNI (FFX)

T systems, UNAV/VNAV NA below -16°C (4°F) or above 4°C (116°F). Rwy 19 helicopter visibility reduction below ¾ SM NA. DME/DME RNP-0.3 NA. When local altimeter setting not received, use Muskegon altimeter setting and increase all DA 65 feet, and all visibilities ¼ mile. Increase all MDA 80 feet, and Cat C/D visibilities ¼ mile. VDP NA when using Muskegon altimeter setting.

MISSED APPROACH:
Climb to 2900 direct
SACOL and hold.

AWOS-3 118.775	GREAT LAKES APP CON ★ 119.8 290.35	CLNC DEL 118.25	UNICOM 123.0 (CTAF) 0
--------------------------	--	---------------------------	---------------------------------



CATEGORY	A	B	C	D
LPV DA	1074-1 305 (400-1)			
INAV/ VNAV DA	1295-2 526 (600-2)			
INAV MDA	1220-1 451 (500-1)	1220-1½ 451 (500-1½)	1220-1½ 451 (500-1½)	
CIRCLING	1260-1 488 (500-1)	1460-2 688 (700-2)	1460-2½ 688 (700-2½)	