

WAAS
CH **56505**
W01A

APP CRS
004°

Rwy Idg
TDZE
Apt Elev

6501
760
772

RNAV (GPS) RWY 1

FREMONT MUNI (F'F'X)

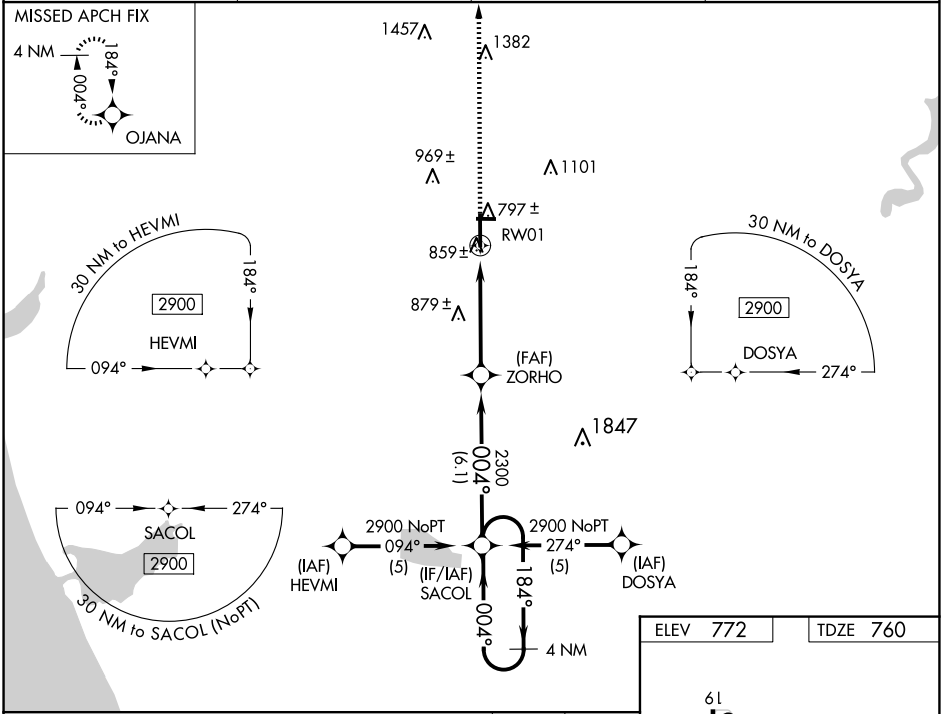
▼

▲

Baro-VNAV NA when using Muskegon altimeter setting. For uncompensated Baro-VNAV systems, LNAV/VNAV NA below -16°C (4°F) or above 47°C (116°F). Rwy 1 helicopter visibility reduction below ¾ SM NA. DME/DME RNP-0.3 NA. When local altimeter setting not received, use Muskegon altimeter setting and increase all DA 65 feet, and all visibilities ¼ mile. Increase all MDA 80 feet, and Cat C/D visibilities ¼ mile. VDP NA when using Muskegon altimeter setting.

MISSED APPROACH:
Climb to 2900 direct
OJANA and hold.

AWOS-3 118.775	GREAT LAKES APP CON ★ 119.8 290.35	CLNC DEL 118.25	UNICOM 123.0 (CTAF) 0
--------------------------	--	---------------------------	---------------------------------



4 NM Holding Pattern

SACOL

ZORHO

2900

OJANA

GP 3.00°

TCH 45

2300

2300

1.1 NM to RW01

RW01

*1.1 NM to RW01

*LNAV only.

6.1 NM

3.6 NM

1.1

CATEGORY	A	B	C	D
LPV DA	1036-1 276 (300-1)			
LNAV/ VNAV DA	1129-1¼ 369 (400-1¼)			
LNAV MDA	1140-1 380 (400-1)		1140-1¼ 380 (400-1¼)	
CIRCLING	1260-1 488 (500-1)		1460-2 688 (700-2)	1460-2¼ 688 (700-2¼)

ELEV 772

TDZE 760

61

10

3502 X 75

28

650 X 100

004°

REIL Rwy's 1 and 19

MIRL Rwy's 1-19 and 10-28

EC-1, 10 JUL 2025 to 07 AUG 2025

EC-1, 10 JUL 2025 to 07 AUG 2025