

COLDWATER, MICHIGAN

AL-5259 (FAA)

23278

WAAS CH 99606 W25A	APP CRS 249°	Rwy Idg TDZE Apt Elev	5350 958 958
--	------------------------	-----------------------------	---

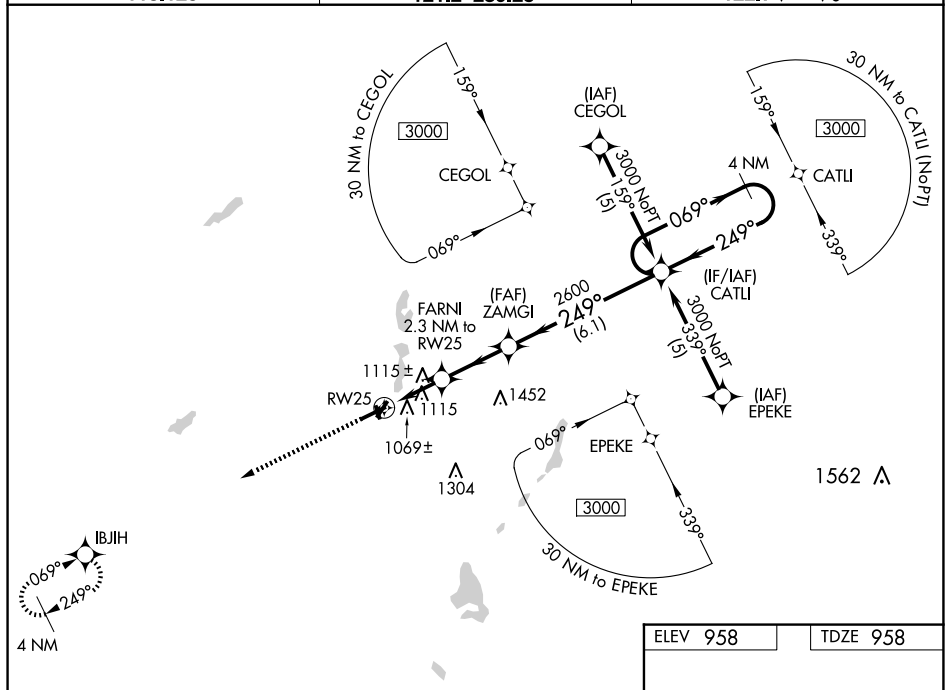
RNAV (GPS) RWY 25

RNP APCH

▼ Rwy 25 helicopter visibility reduction below 1 SM NA. When local altimeter setting not received, use Sturgis altimeter setting and increase all DAs 48 feet and LPV visibility $\frac{1}{4}$ mile all CATs and all MDAs 60 feet and LNAV Cat C visibility $\frac{1}{4}$ mile. Baro-VNAV NA when using Sturgis altimeter setting. For uncompensated Baro-VNAV systems, LNAV/VNAV NA below -16°C or above 54°C. Circling NA to Rwy 16 and 34.

MISSED APPROACH.
Climb to 3000 direct
IBJH and hold.

AWOS-3 118.125	GREAT LAKES APP CON * 121.2 239.25	UNICOM 122.7 (CTAF) 0
-------------------	---------------------------------------	--------------------------



* NNAV only

RW25

FARNI
2.3 NM to RW25

ZAMGI

CATU

4 NM Holding Pattern

069° → 3000

← 249°

GP 3.00°
TCH 40

CATEGORY	A	B	C	D
LPV DA	1305-1¼	347 (400-1¼)		NA
LNAV/VNAV DA	1423-1¾	465 (500-1¾)		NA
LNAV MDA	1420-1	462 (500-1)	1420-1¼ 462 (500-1¼)	NA
CIRCLING	1420-1 462 (500-1)	1440-1 482 (500-1)	1560-1¾ 602 (700-1¾)	NA

ELEV 958

TDZE 958

249°

22

22

91

5350 X 75

2500

3600 X 75

34

MIRA Rwy 4-22 and 7-25

REIL Rwy 7 and 25