

GRAND RAPIDS, MINNESOTA

AL-5258 (FAA)

21168

WAAS CH 86412 W34A	APP CRS 344°	Rwy Idg 5756 TDZE 1356 Apt Elev 1356
--	------------------------	---

APP CRS
344°

Rwy Idg	5756
TDZE	1356
Apt Elev	1356

RNAV (GPS) RWY 34
GRAND RAPIDS/ITASCA COUNTY-GORDON NEWSTROM FLD (GPZ)

RNP APCH.

T Circling to Rwy 5, 23 NA at night. Circling NA for Cat D east of Rwy 16-34.
A For uncompensated Baro-VNAV systems, LNAV/VNAV NA below -17°C or above 54°C.

MAISR



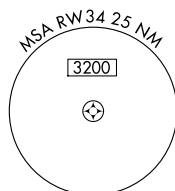
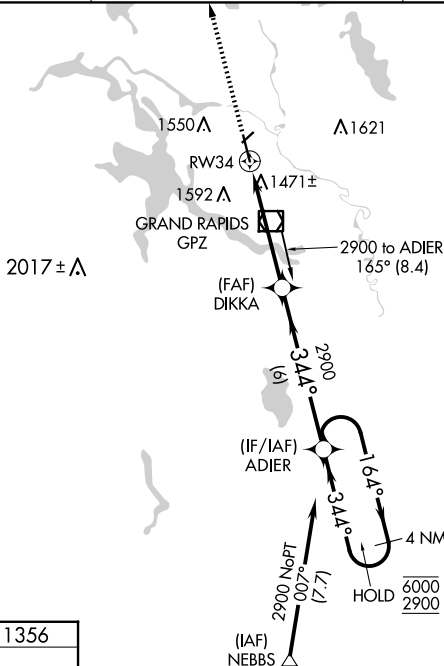
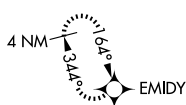
MISSED APPROACH: Climb to 3000
direct EMIDY and hold.

AWOS-3PT
118.425

MINNEAPOLIS CENTER
127.9 281.45

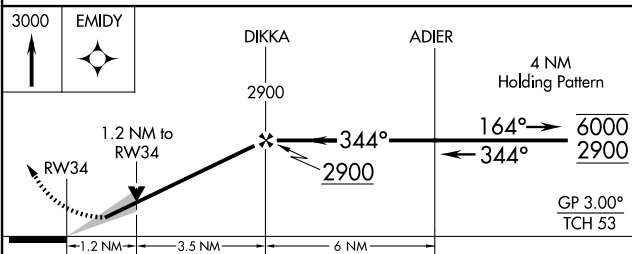
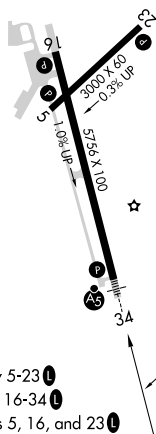
UNICOM
122.8 (CTAF) **L**


MISSED APCH FIX



ELEV 1356

TDZE 1356



CATEGORY		A	B	C	D
LPV	DA	1556-1½		200 (200-½)	
RNAV/ VNAV	DA	1747-5⁄8		391 (400-5⁄8)	
RNAV	MDA	1800-1½	444 (500-½)	1800-7⁄8	444 (500-7⁄8)
 CIRCLING		1900-1	544 (600-1)	1900-1½ 544 (600-1½)	1960-2 604 (700-2)

GRAND RAPIDS, MINNESOTA
Amdt 1 22APR21

GRAND RAPIDS/ITASCA COUNTY-GORDON NEWSTROM FLD (GPZ)
47°13'N-93°31'W DRY (GPS) DRY 24

RNAV (GPS) RWY 34

NC-1, 10 JUL 2025 to 07 AUG 2025