

|         |          |      |
|---------|----------|------|
| APP CRS | Rwy Idg  | 5756 |
| 164°    | TDZE     | 1327 |
|         | Apt Elev | 1356 |

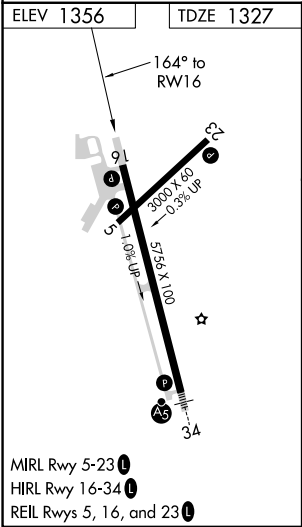
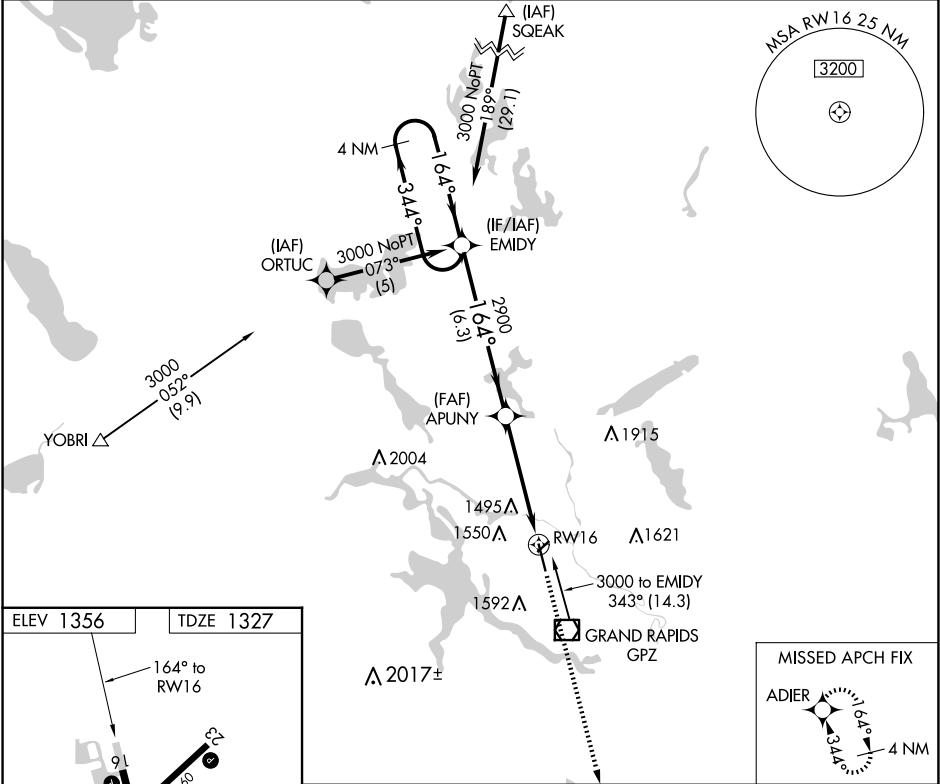
RNAV (GPS) RWY 16  
GRAND RAPIDS/ITASCA COUNTY-GORDON NEWSTROM FLD (GPZ)

RNP APCH.

**⚠** Circling Rwy 5 NA at night. Circling NA for Cat D east of Rwy 16-34.  
**⚠** When local altimeter setting not received, use Hibbing altimeter setting and increase all MDAs 80 feet, increase LNAV Cat C visibility 1/8 SM and Circling Cats C/D visibility 1/4 SM.

MISSED APPROACH: Climb to 2900 direct ADIER and hold.

|                     |                                    |                          |
|---------------------|------------------------------------|--------------------------|
| AWOS-3PT<br>118.425 | MINNEAPOLIS CENTER<br>127.9 281.45 | UNICOM<br>122.8 (CTAF) 0 |
|---------------------|------------------------------------|--------------------------|



|                      |        |             |                               |                               |       |
|----------------------|--------|-------------|-------------------------------|-------------------------------|-------|
| 4 NM Holding Pattern |        | EMIDY       | APUNY                         | 2900                          | ADIER |
| 3000                 |        | 344°        | 164°                          | 3.04° TCH 47                  | RW16  |
|                      |        | 6.3 NM      | 4.8 NM                        |                               |       |
| CATEGORY             | A      | B           | C                             | D                             |       |
| LNAV MDA             | 1760-1 | 433 (500-1) | 1760-1 1/4<br>433 (500-1 1/4) | 1760-1 1/2<br>433 (500-1 1/2) |       |
| <b>C</b> CIRCLING    | 1900-1 | 544 (600-1) | 1900-1 1/2<br>544 (600-1 1/2) | 2000-2<br>644 (700-2)         |       |

NC-1, 10 JUL 2025 to 07 AUG 2025

NC-1, 10 JUL 2025 to 07 AUG 2025