

WAAS
CH **42532**
W28A

APP CRS
278°

Rwy Idg
TDZE
Apt Elev

5501
621
621

RNAV (GPS) RWY 28

MANISTEE COUNTY/BLACKER (MBL)

RNP APCH - GPS.

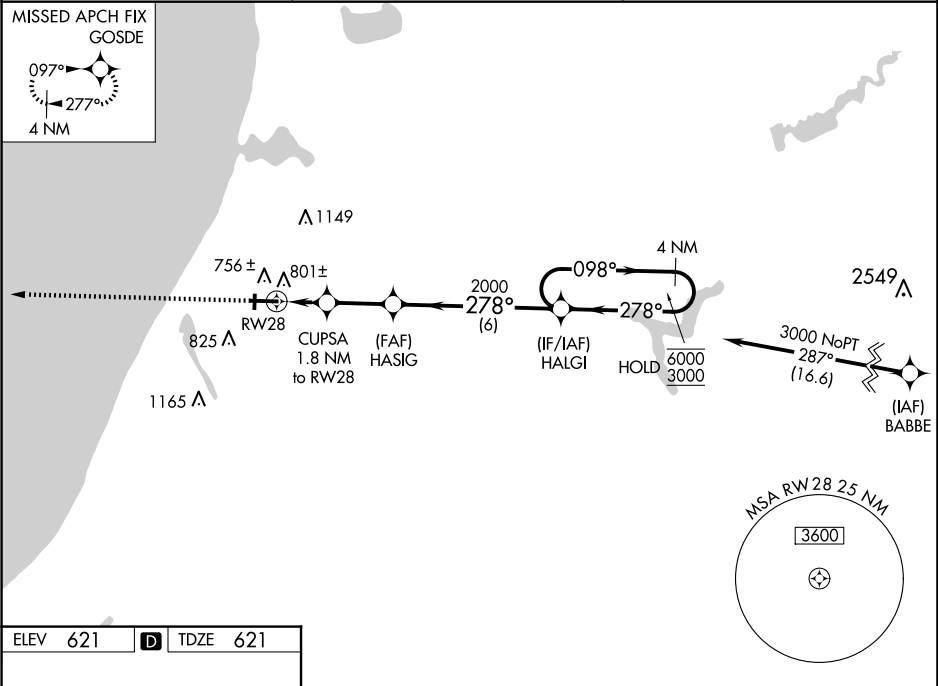
Circling to Rwy 1, 19 NA at night. For uncompensated Baro-VNAV systems, LNAV/VNAV NA below -16°C or above 54°C.

MALSRL

MISSED APPROACH:

Climb to 2500 direct GOSDE and hold.

AWOS-3PT 118.825	MINNEAPOLIS CENTER 120.85 322.35	UNICOM 122.8 (CTAF) 0
----------------------------	--	---------------------------------



ELEV 621	D	TDZE 621
----------	----------	----------

2500

GOSDE

VGSI and RNAV glidepath not coincident (VGSI Angle 3.00/TCH 45).

4 NM Holding Pattern

CUPSA
1.8 NM to RW28

HASIG
2000

HALGI

1.2 NM to RW28

1240

2000

098°

278°

6000

3000

GP 3.00°

TCH 50

1.2 NM

0.6 NM

2.4 NM

6 NM

CATEGORY	A	B	C	D
LPV DA	821-½		200 (200-½)	
LNAV/VNAV DA	984-⅝		363 (400-⅝)	
LNAV MDA	1060-½	439 (500-½)	1060-¾	439 (500-¾)
CIRCLING	1160-1 539 (600-1)	1220-1 599 (600-1)	1400-2¼ 779 (800-2¼)	1500-2¾ 879 (900-2¾)

HIRL Rwy 10-28 0

MIRL Rwy 1-19 0

REIL Rwy 10 0