
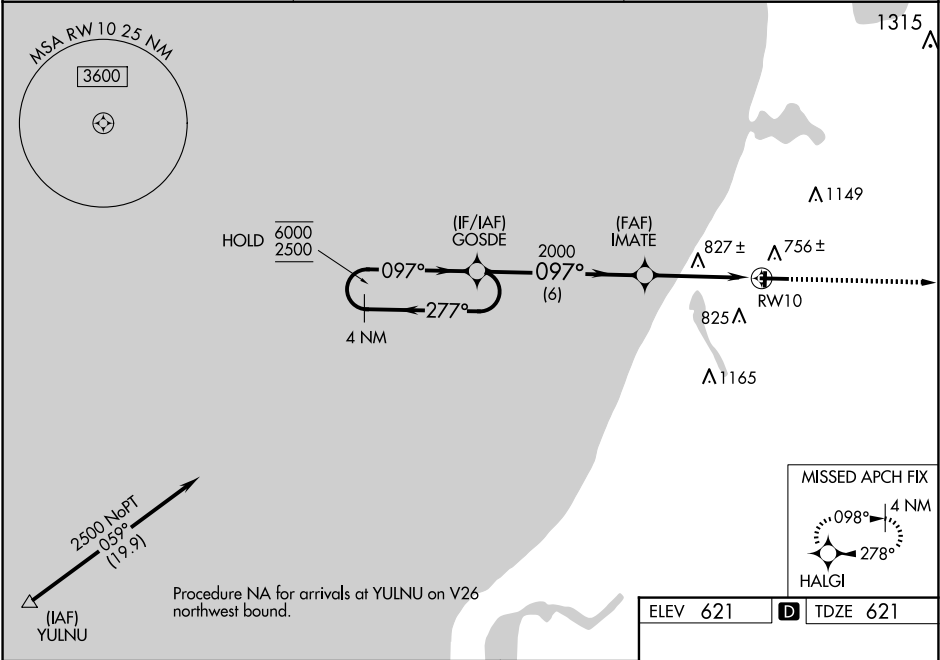


WAAS CH 60933 W10A	APP CRS 097°	Rwy Idg 5501 TDZE 621 Apt Elev 621
--	------------------------	---

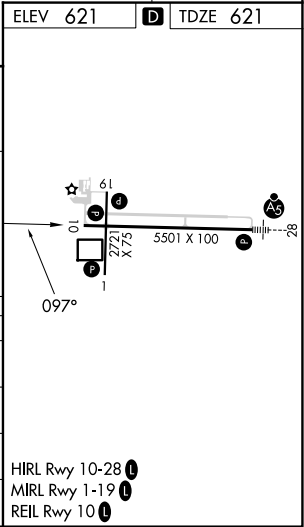
RNAV (GPS) RWY 10
MANISTEE COUNTY/BLACKER (MBL)

RNP APCH - GPS.		MISSED APPROACH: Climb to 3000 direct HALGI and hold.
 Circling Rwy 1, 19 NA at night. Rwy 10 helicopter visibility reduction below ¾ SM NA. For uncompensated Baro-VNAV systems, LNAV/VNAV NA below -16°C or above 54°C.		

AWOS-3PT 118.825	MINNEAPOLIS CENTER 120.85 322.35	UNICOM 122.8 (CTAF) 1
----------------------------	--	---------------------------------



4 NM Holding Pattern		VGSI and RNAV glidepath not coincident (VGSI Angle 3.00/TCH 30).		3000	HALGI
6000 ← 277° 2500 → 097°		GOSDE		2000	IMATE
GP 3.00° TCH 53		2000		1.4 NM to RW10	RW10
		6 NM		2.8 NM	1.4 NM
CATEGORY	A	B	C	D	
LPV DA	890-7⁄8		269 (300-7⁄8)		
LNAV/VNAV DA	1091-13⁄8		470 (500-13⁄8)		
LNAV MDA	1080-1	459 (500-1)	1080-13⁄8	459 (500-13⁄8)	
CIRCLING	1160-1 539 (600-1)	1220-1 599 (600-1)	1400-21⁄4 779 (800-21⁄4)	1500-23⁄4 879 (900-23⁄4)	



EC-1, 10 JUL 2025 to 07 AUG 2025

EC-1, 10 JUL 2025 to 07 AUG 2025