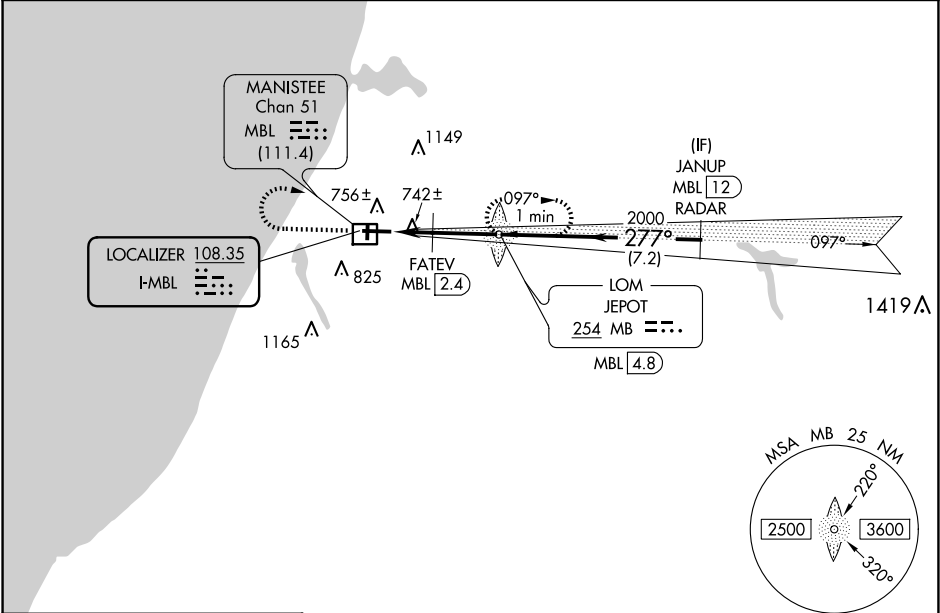


LOC I-MBL	APP CRS	Rwy Idg	5501
108.35	277°	TDZE	621
		Apt Elev	621

ILS or LOC RWY 28
MANISTEE COUNTY/BLACKER (MBL)

ADF required for missed approach. RADAR required for procedure entry. DME or RADAR required.	MALSR	MISSED APPROACH: Climb to 2000 then climbing right turn to 2500 direct JEPOT LOM/MBL 4.8 DME and hold.
<div>⚠</div> <div>⚠</div> <div>Circling Rwy 1, 19 NA at night. For inop ALS, increase FATEV fix minimums S-LOC 28 Cat C and D visibility to 1 SM. DME from MBL DME. DME use requires simultaneous reception of I-MBL and MBL DME.</div>	<div>⚠</div> <div>⚠</div>	

AWOS-3PT 118.825	MINNEAPOLIS CENTER 120.85 322.35	UNICOM 122.8 (CTAF) 0
---------------------	-------------------------------------	--------------------------



ELEV 621	D	TDZE 621
<div>61</div> <div>2721</div> <div>10</div> <div>75</div> <div>5501 X 100</div> <div>277°</div> <div>28</div>		
HIRL Rwys 10-28 0		
MIRL Rwys 1-19 0		
REIL Rwy 10 0		
FAF to MAP 3.9 NM		
Knots	60	90 120 150 180
Min:Sec	3:54	2:36 1:57 1:34 1:18

2000	2500	MB LOM	VGSI and ILS glidepath not coincident (VGSI Angle 3.00/TCH 45).	JANUP MBL 12 RADAR
↑	↷	<div>⚠</div>	MB LOM JEPOT MBL 4.8	
<div>1160</div> <div>1921</div> <div>277°</div> <div>2800</div> <div>GS 3.00° TCH 50</div>				
<div>1 NM</div> <div>0.5 NM</div> <div>2.4 NM</div> <div>7.2 NM</div>				
CATEGORY	A	B	C	D
S-ILS 28	821-1/2 200 (200-1/2)			
S-LOC 28	1160-1/2	539 (600-1/2)	1160-1	539 (600-1)
CIRCLING	1160-1 539 (600-1)	1220-1 599 (600-1)	1400-2 1/4 779 (800-2 1/4)	1520-3 899 (900-3)
FATEV FIX MINIMUMS				
S-LOC 28	1000-1/2	379 (400-1/2)	1000-5/8	379 (400-5/8)
CIRCLING	1160-1 539 (600-1)	1220-1 599 (600-1)	1400-2 1/4 779 (800-2 1/4)	1520-3 899 (900-3)

EC-1, 10 JUL 2025 to 07 AUG 2025

EC-1, 10 JUL 2025 to 07 AUG 2025