

LOC/DME I-SFZ	APP CRS	Rwy Idg	5000
111.9	047°	TDZE	429
Chan 56		Apt Elev	441

LOC RWY 5

NORTH CENTRAL STATE (SF'Z)

▼

▲ NA

Circling Rwy 15, 33 NA at night. VDP NA with Providence altimeter setting. When local altimeter setting not received, use Providence altimeter setting and increase all MDA 100 feet; increase S-5 Cat C and Circling Cat C visibility ¼ mile, and ESULE fix minimums S-5 Cat C visibility ¼ mile.

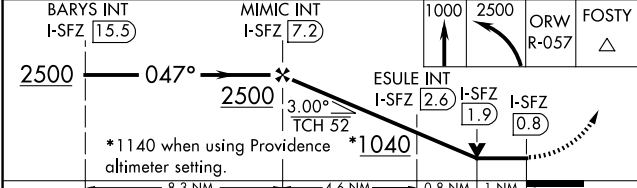
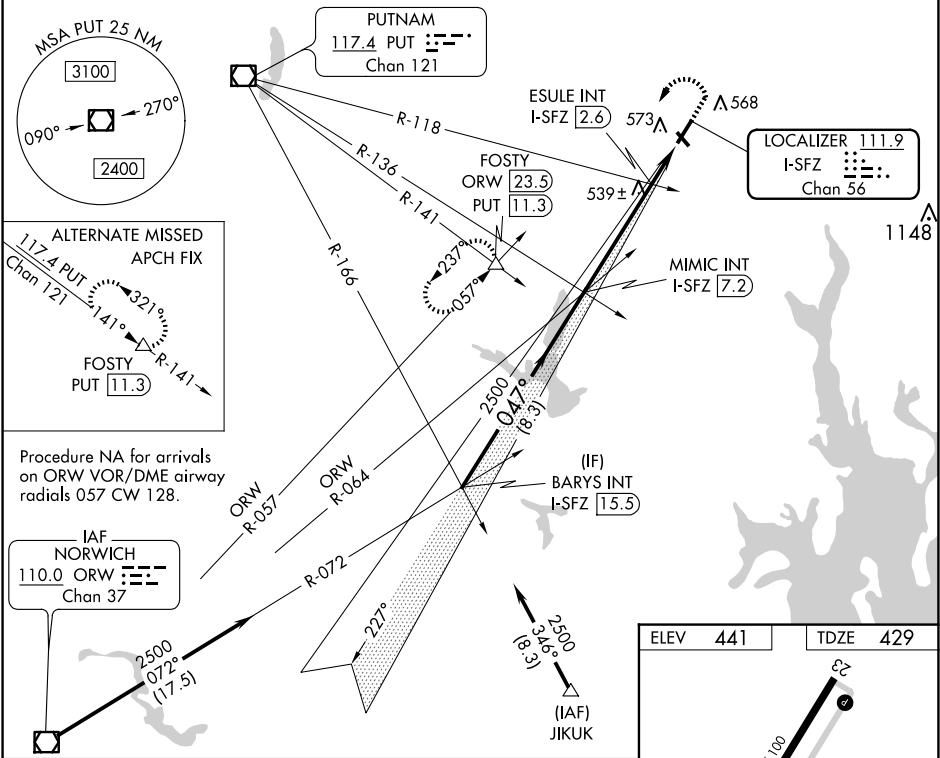
MALS

≡

▲

MISSED APPROACH: Climb to 1000 then climbing left turn to 2500 on ORW VOR/DME R-057 to FOSTY INT/ ORW 23.5 DME and hold.

AWOS-3PT	PROVIDENCE APP CON ★	CINC DEL	UNICOM
120.775	123.675 244.875	124.35	123.075 (CTAF) 0



CATEGORY	A	B	C	D
S-5	1040-¾ 611 (600-¾)		1040-1½ 611 (600-1½)	NA
◼ CIRCLING	1040-1 599 (600-1)		1040-1¾ 599 (600-1¾)	NA
ESULE FIX MINIMUMS (DUAL VOR RECEIVERS OR DME REQUIRED)				
S-5	800-¾ 371 (400-¾)		800-7⁄8 371 (400-7⁄8)	NA
◼ CIRCLING	900-1 459 (500-1)		900-1½ 459 (500-1½)	NA

