

WAAS CH <b>97512</b> <b>W32A</b>	APP CRS <b>324°</b>	Rwy Idg TDZE <b>715</b> Apt Elev <b>726</b>
--	------------------------	---

RNAV (GPS) RWY 32

WINCHESTER RGNL (OKV)

RNP APCH

▼

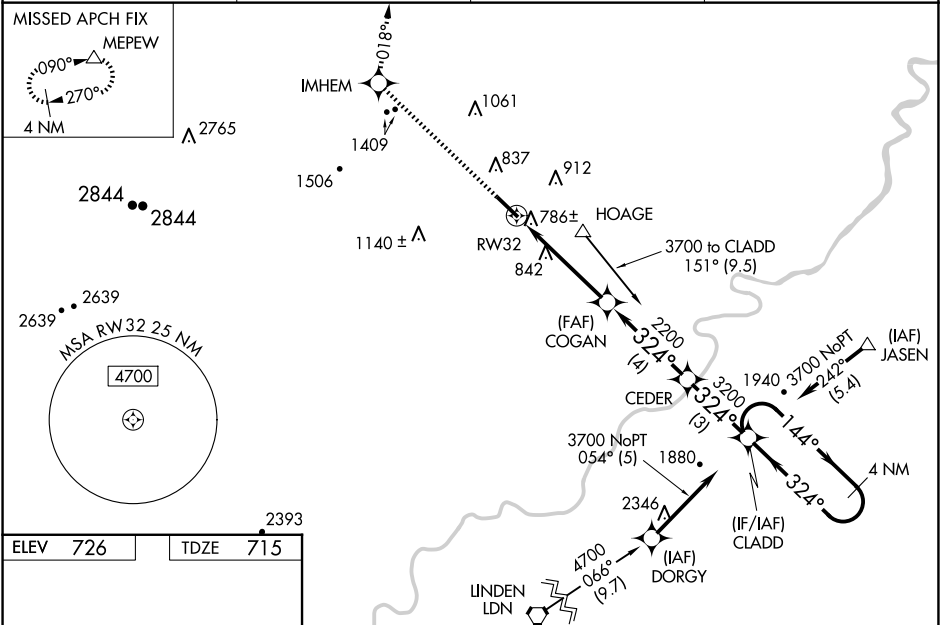
▲

Baro-VNAV NA when using Martinsburg altimeter setting. For uncompensated Baro-VNAV systems, LNAV/VNAV NA below -16°C or above 47°C.  
Rwy 32 helicopter visibility reduction below ¾ SM NA. When local altimeter setting not received, use Martinsburg altimeter setting and increase all DA 63 feet and all MDA 80 feet, and LNAV/VNAV all Cats and Circling Cat C visibility ¼ mile. For inoperative MALSR, increase LNAV Cats A, B and C visibility to 1 mile and LNAV Cat D visibility to 1¼ mile. Inoperative table does not apply to LPV. For inoperative MALSR when using Martinsburg altimeter setting, increase LPV all Cats and LNAV Cats A and B visibility to 1 mile. VDP NA when using Martinsburg altimeter setting.

MALSR

MISSED APPROACH:  
Climb to 5000 direct IMHEM and via track 018° to MEPEW and hold, continue climb-in-hold to 5000.

AWOS-3 <b>124.85</b>	POTOMAC APP CON <b>120.45 306.925</b>	CLNC DEL <b>126.15</b>	UNICOM <b>122.975</b> (CTAF) <b>1</b>
-------------------------	--	---------------------------	--



	IMHEM	tr 018°	MEPEW	CLADD	4 NM Holding Pattern
*LNAV only	*1.1 NM to RW32	COGAN	CEDER	324°	3700
1.1	3.4 NM	4 NM	3 NM		
CATEGORY	A	B	C	D	
LPV DA	915-¾ 200 (200-¾)				
LNAV/VNAV DA	1056-¾ 341 (400-¾)				
LNAV MDA	1100-¾ 385 (400-¾)				
CIRCLING	1180-1 454 (500-1)	1220-1 494 (500-1)	1380-1¾ 654 (700-1¾)	1480-2½ 754 (800-2½)	