

WAAS CH 86813 W07A	APP CRS 067°	Rwy Idg TDZE 3793 Apt Elev 3793	RNAV (GPS) RWY 7 INGALLS FLD (HSP)
--	------------------------	---	--

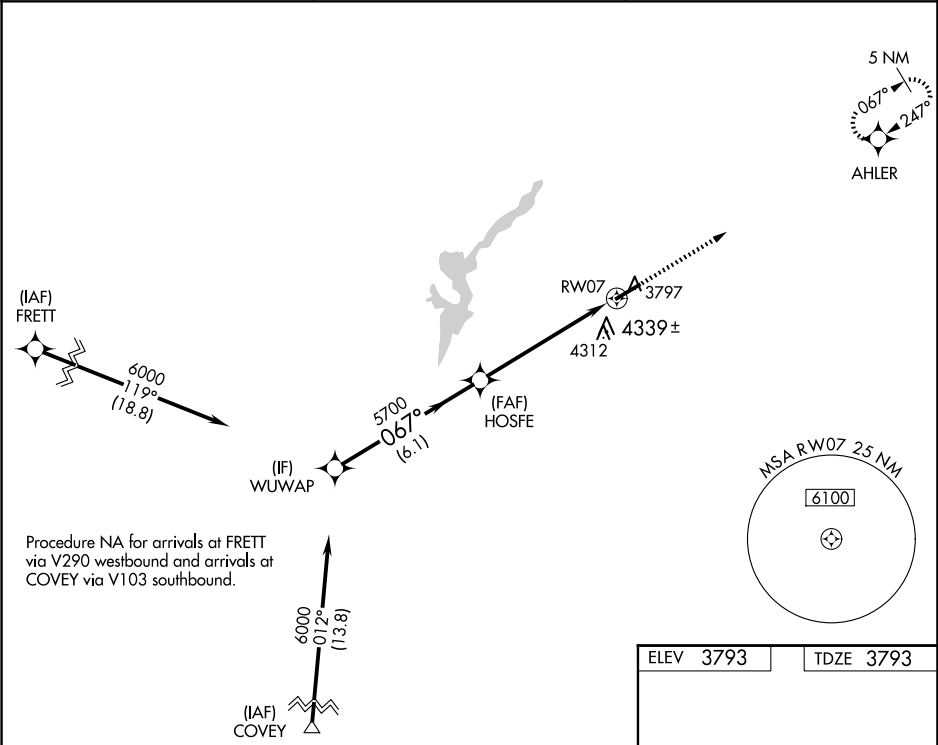
T

A

Circling NA southeast of Rwy 7-25. Baro-VNAV NA.
DME/DME RNP-0.3 NA. Visibility reduction by helicopters NA.
When local altimeter setting not received, procedure NA.

MISSED APPROACH: Climb to 6000 direct AHLER and hold.

AWOS-3 118.8	WASHINGTON CENTER 134.4 353.9	UNICOM 123.0 (CTAF) 0
------------------------	---	---------------------------------



Procedure Turn NA		WUWAP VGSI and RNAV glidepath not coincident (VGSI Angle 3.00/TCH 45).		6000	AHLER
GP 3.00° TCH 60		HOSFE		RWY 7	
		6.1 NM		5.7 NM	
CATEGORY		A	B	C	D
LPV DA		4143-1¼		350 (400-1¼)	
LNAB/VNAV DA		4619-3		826 (900-3)	
LNAB MDA		4700-1¼ 907 (1000-1¼)		4700-2¾ 907 (1000-2¾)	
CIRCLING		4700-1¼ 907 (1000-1¼)		4700-2¾ 907 (1000-2¾)	
		4700-1¼ 907 (1000-1¼)		4700-3 907 (1000-3)	
		REIL Rwy 25 0		HIRL Rwy 7-25 0	