

APP CRS  
309°

Rwy Ldg  
TDZE  
Apt Elev  
N/A  
N/A  
5102

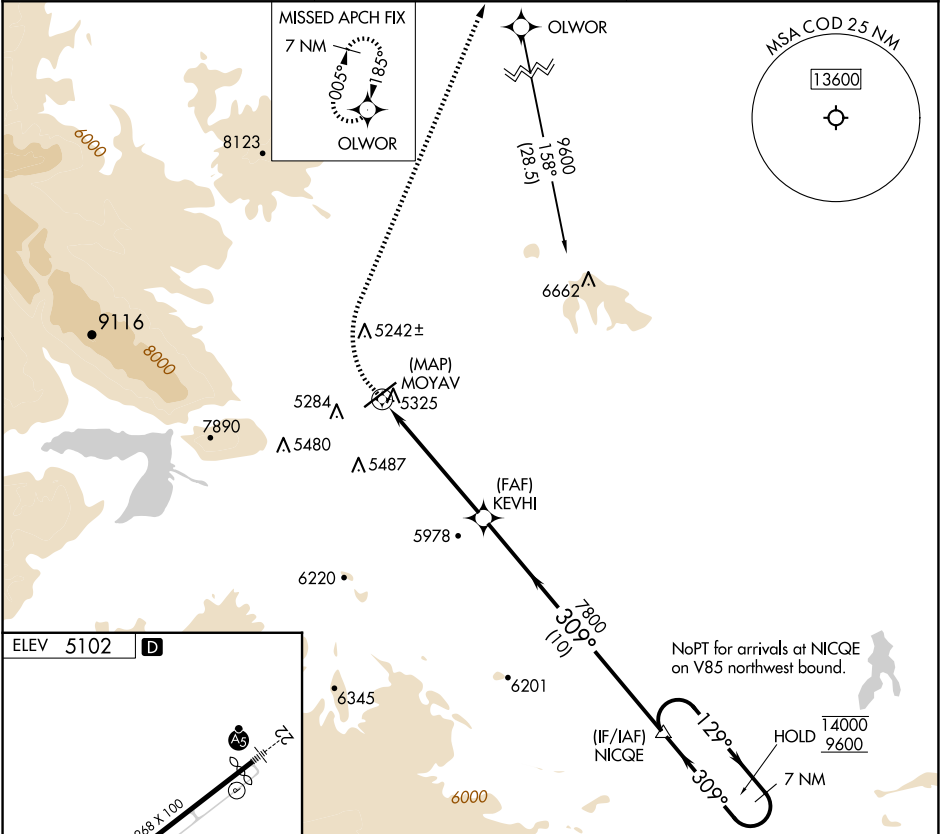
RNAV (GPS)-B  
YELLOWSTONE RGNL (COD)

RNP APCH - GPS.

-10°C

MISSED APPROACH: Climb to 6200 then climbing right turn to 8000 direct OLOWOR and hold.

AWOS-3PT 135.075	SALT LAKE CENTER 127.75 351.9	UNICOM 122.8 (CTAF) 0
---------------------	----------------------------------	--------------------------



ELEV 5102 D

6200 8000 OLOWOR

MOYAV KEVHI

NICQE

7 NM Holding Pattern

MOYAV KEVHI

7800

NICQE

129° 309°

14000 9600

5.6 NM 10 NM

CATEGORY	A	B	C	D
CIRCLING	6200-1¼ 1098 (1100-1¼)	6200-1½ 1098 (1100-1½)	6200-3 1098 (1100-3)	7000-3 1898 (1900-3)

NW-1, 10 JUL 2025 to 07 AUG 2025

NW-1, 10 JUL 2025 to 07 AUG 2025