

CODY, WYOMING

AL-5243 (FAA)

25163

WAAS
CH 45943
W04A

APP CRS
0380

Rwy Ldg	7178
TDZE	5097
Apt Elev	5102

RNAV (GPS) RWY 4
YELLOWSTONE RGNL (COD)

RNP APCH.



Rwy 4 helicopter visibility reduction below $\frac{3}{4}$ SM NA.
Baro-VNAV NA.

MALSF

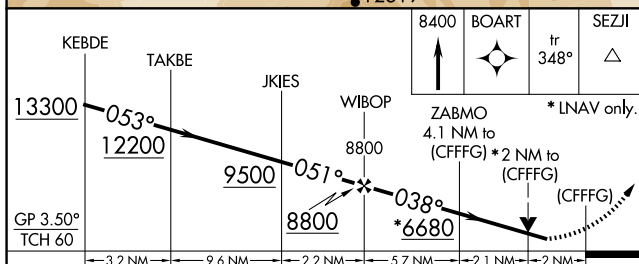
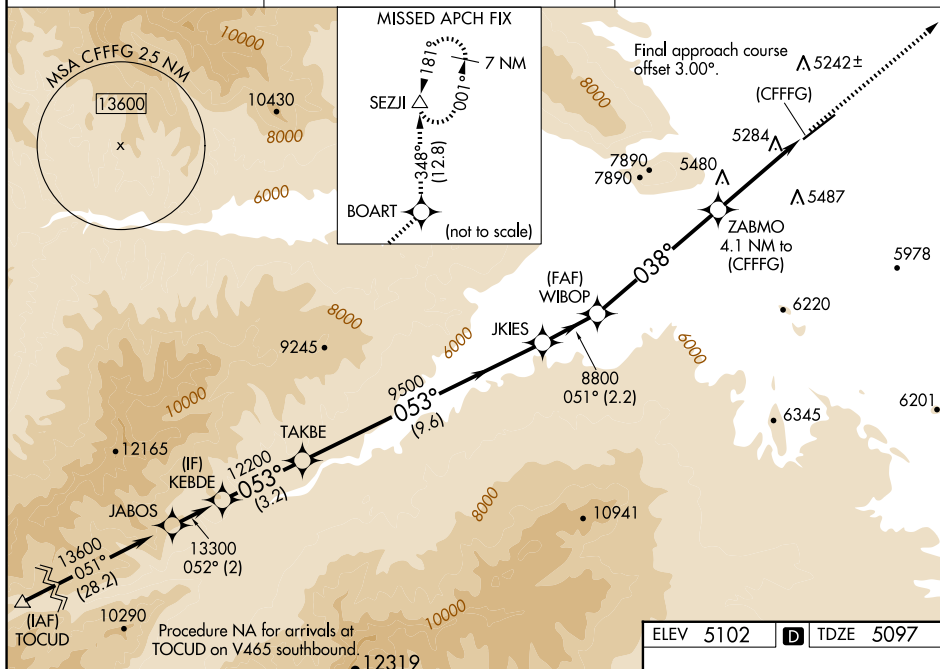



MISSED APPROACH: Climb to 8400 direct BOART and on track 348° to SEZI and hold.

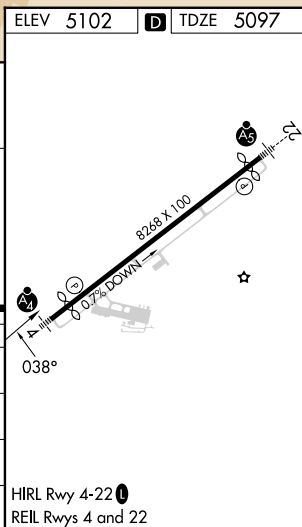
AWOS-3PT
135.075

SALT LAKE CENTER
127.75 351.9

UNICOM
122.8 (CTAF) **L**



CATEGORY	A	B	C	D
LPV DA	5792-2 695 (700-2)			
INAV/ VNAV DA	5891-2½ 794 (800-2½)			
INAV MDA	5920-1 823 (900-1)	5920-1¼ 823 (900-1¼)	5920-2½ 823 (900-2½)	
 CIRCLING	5920-1¼ 818 (900-1¼)		5940-2½ 838 (900-2½)	7000-3 1898 (1900-3)



CODY, WYOMING
Amdt 1 31DEC20

44°31'N-109°01'W

YELLOWSTONE RGNL (COD)
RNAV (GPS) RWY 4

NW-1, 10 JUL 2025 to 07 AUG 2025