

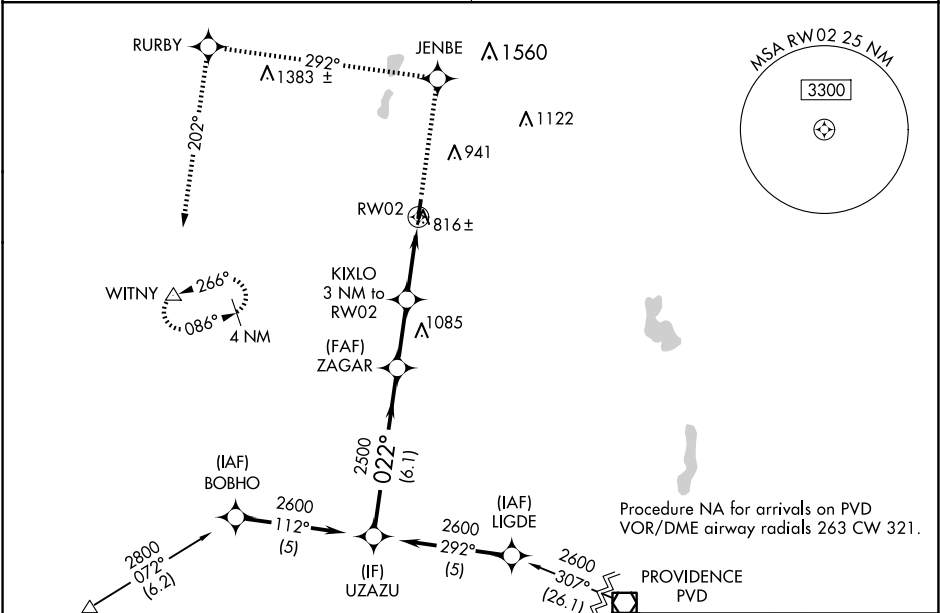
WAAS CH 42616 W02A	APP CRS 022°	Rwy Idg TDZE 696 Apt Elev 699	3501
--	------------------------	---	-------------

RNAV (GPS) RWY 2

SOUTHBRIDGE MUNI (3B0)

RNP APCH - GPS.	MISSED APPROACH: Climb to 3000 direct JENBE and via track 292° to RURBY and via track 202° to WITNY and hold.
▼ ▲ NA	Circling Rwy 20 NA at night. Use Worcester Rgnl altimeter setting, when not received, use Windsor Locks altimeter setting: increase LPV DA to 1090 feet and all visibilities ½ SM. Increase all MDAs 80 feet and LNAV visibility Cat C ¼ SM, and Circling visibility Cat C ½ SM.

BRADLEY APP CON 119.0 327.1	UNICOM 122.8 (CTAF) 0
---------------------------------------	---------------------------------



ELEV 699	TDZE 696
----------	----------

	3000	JENBE	tr 292°	RURBY	tr 202°	WITNY
UZAZU						△
2600						
Procedure Turn NA						
GP 3.00° TCH 40						
	6.1 NM	2.5 NM	3 NM			
CATEGORY	A	B	C	D		
LPV DA	1018-1	322 (400-1)		NA		
LNAV MDA	1300-1 604 (700-1)	1300-1¼ 604 (700-1¼)		NA		
● CIRCLING	1360-1 661 (700-1)	1360-1¼ 661 (700-1¼)		NA		

