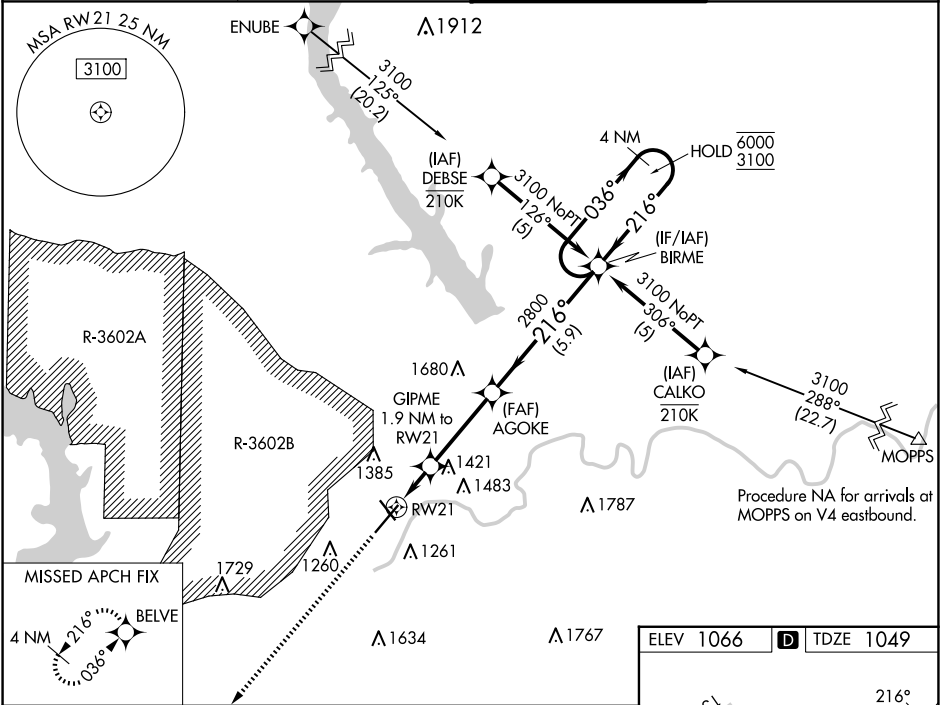


WAAS CH 53319 W21A	APP CRS 216°	Rwy Idg TDZE Apt Elev	7030 1049 1066
--	------------------------	-----------------------------	---

RNAV (GPS) RWY 21

MANHATTAN RGNL (MHK)

RNP APCH - GPS.		MISSED APPROACH: Climb to 3800 direct BELVE and hold.	
⚠ Circling NA northwest of Rwy 3-21. Rwy 21 helicopter visibility reduction below ¾ SM NA. For uncompensated Baro-VNAV systems, LNAV/VNAV NA below -20°C or above 54°C.			
ASOS 119.075	MARSHALL AAF GCA* 121.25 269.05	MANHATTAN TOWER* 118.55 (CTAF) 0	GND CON 121.85



3800 BELVE		BIRME		4 NM Holding Pattern	
↑		AGOKE		6000 3100	
RWY 21		GIPME 1.9 NM to RWY 21		GP 3.00° TCH 50	
1.9 NM		3.5 NM		5.9 NM	
CATEGORY	A	B	C	D	
LPV DA	1249-3¼ 200 (200-¾)				
LNAV/VNAV DA	1634-1¾ 585 (600-1¾)				
LNAV MDA	1660-1 611 (600-1)		1660-1¾ 611 (600-1¾)		
CIRCLING	1660-1 594 (600-1)		1920-2½ 854 (900-2½)		1920-2¾ 854 (900-2¾)

