

| | | |
|--|------------------------|---|
| WAAS CH 57931 W27A | APP CRS 274° | Rwy Idg TDZE 1372 Apt Elev 1376 |
|--|------------------------|---|

RNAV (GPS) RWY 27

EVELETH/VIRGINIA MUNI (EVM)

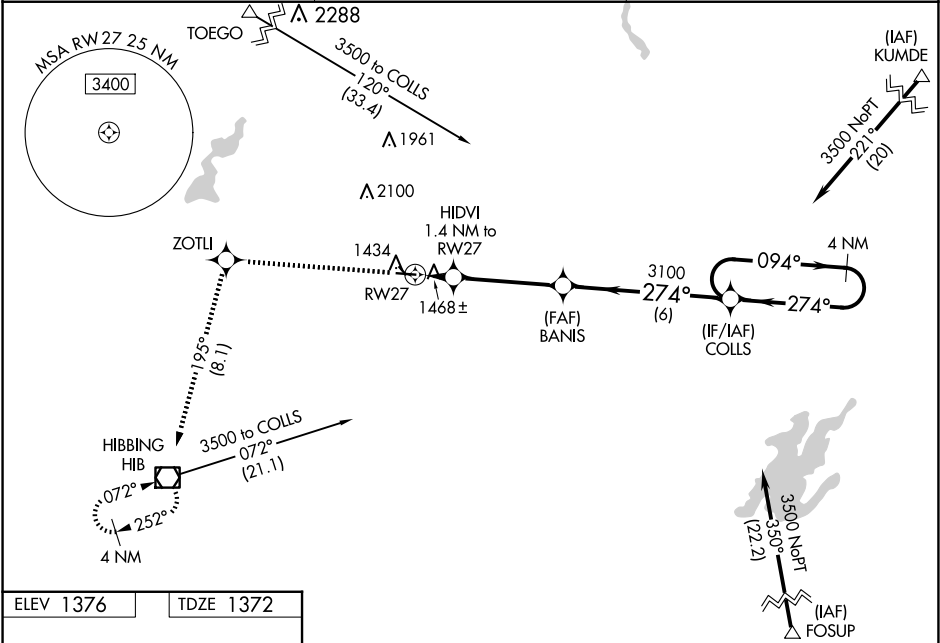
⚠

Baro-VNAV NA when using Hibbing altimeter setting. For uncompensated Baro-VNAV systems, procedure NA below -17°C (2°F) or above 54°C (130°F). DME/DME RNP-0.3 NA. Circling to Rwy 14 and 32 NA. Rwy 27 helicopter visibility reduction below ¾ SM NA. When local altimeter setting not received, use Hibbing altimeter setting and increase LPV DA to 1670 feet, increase LNAV/VNAV DA to 1687 feet; increase all MDAs 40 feet and increase LNAV Cat C/D visibility ½ SM.

MISSED APPROACH:

Climb to 3600 direct ZOTLI and on track 195° to HIB VOR/DME and hold.

| | | |
|--------------------------|---------------------------------------|---------------------------------|
| AWOS-3 118.825 | DULUTH APP CON 125.45 233.7 | UNICOM 122.7 (CTAF) 1 |
|--------------------------|---------------------------------------|---------------------------------|



ELEV 1376

TDZE 1372

3600

ZOTLI

tr 195°

HIB

*LNAV only

HIDVI 1.4 NM to RW27

BANIS 3100

COLLS

4 NM Holding Pattern

RW27

1840*

3100

094°

274°

3500

GP 3.00°

TCH 41

| CATEGORY | A | B | C | D |
|--------------|-----------------------|-----------------------|-------------------------|-------------------------|
| LPV DA | 1634-1½ | 262 (300-1½) | | |
| LNAV/VNAV DA | 1651-1 | 279 (300-1) | | |
| LNAV MDA | 1720-1 | 348 (400-1) | | |
| CIRCLING | 1880-1 504 (600-1) | 1940-1 564 (600-1) | 2260-2¾ 884 (900-2¾) | 2460-3 1084 (1100-3) |

MIRL Rwy 9-27 and 14-32 1

REIL Rwy 27 1