

| | | |
|--|------------------------|---|
| WAAS CH 63038 W36A | APP CRS 356° | Rwy Ldg 5513 TDZE 1304 Apt Elev 1304 |
|--|------------------------|---|

RNAV (GPS) RWY 36

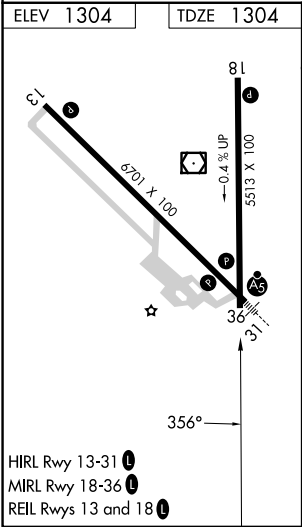
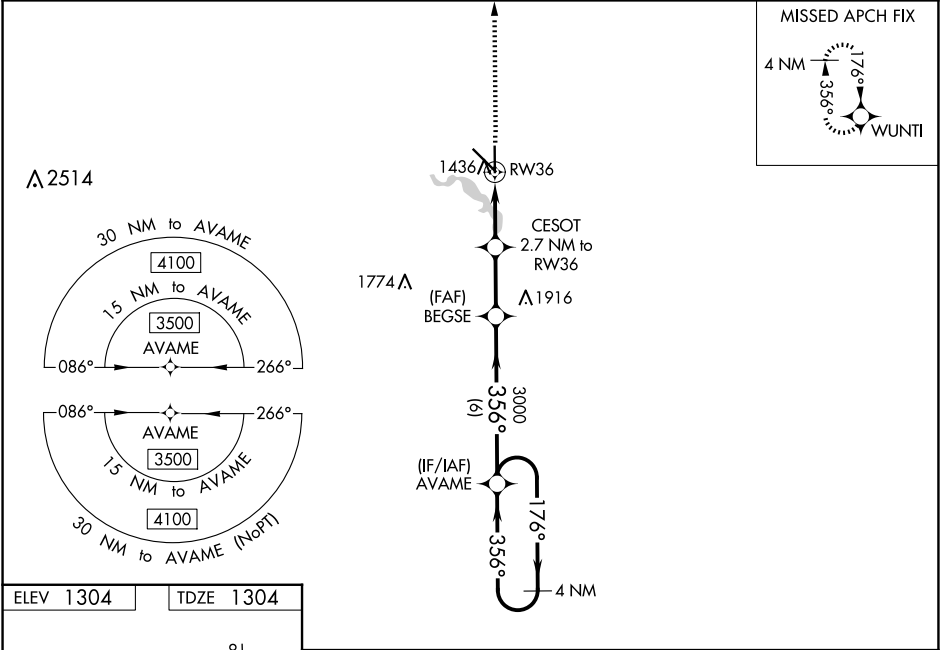
MITCHELL MUNI (MHE)

⚠

For uncompensated Baro-VNAV systems, LNAV/VNAV NA below -21°C (-5°F) or above 54°C (130°F). DME/DME RNP-0.3 NA. When local altimeter setting not received, use Huron Rgnl altimeter setting and increase LPV DA to 1643, and LNAV/VNAV DA to 1697. Increase all MDA 100 feet. Increase LPV visibility, all Cats, to 1½ mile, LNAV/VNAV visibility, all Cats, and LNAV visibility Cats C/D to 1¾ mile and increase Circling Cat C visibility to 1¾ mile. Baro-VNAV and VDP NA when using Huron Rgnl altimeter setting.

MISSED APPROACH:
Climb to 3500 direct WUNTI and hold.

| | | |
|------------------------|---|---------------------------------|
| ASOS 124.175 | MINNEAPOLIS CENTER 126.25 339.8 | UNICOM 122.8 (CTAF) 0 |
|------------------------|---|---------------------------------|



3500 WUNTI

CESOT 2.7 NM to RW36

BEGSE

3000

356°

176°

3500

4 NM Holding Pattern

GP 3.00° TCH 50

| | | | | |
|----------------------|-----------------------|-----------------------|-------------------------|-----------------------|
| 3500 | 1.1 NM | 1.6 NM | 2.5 NM | 6 NM |
| WUNTI | | | | |
| *LNAV only | | | | |
| *1.1 NM to RW36 | | | | |
| 2200* | | | | |
| 3000 | | | | |
| 356° | | | | |
| 176° | | | | |
| 3500 | | | | |
| 4 NM Holding Pattern | | | | |
| GP 3.00° TCH 50 | | | | |
| CATEGORY | A | B | C | D |
| LPV DA | 1554-1 | 250 (300-1) | | |
| LNAV/VNAV DA | 1608-1 | 304 (400-1) | | |
| LNAV MDA | 1700-1 | 396 (400-1) | 1700-1½ | 396 (400-1½) |
| CIRCLING | 1740-1 436 (500-1) | 1760-1 456 (500-1) | 1820-1½ 516 (600-1½) | 1860-2 556 (600-2) |

NC-1, 10 JUL 2025 to 07 AUG 2025

NC-1, 10 JUL 2025 to 07 AUG 2025