

NC-3, 10 JUL 2025 to 07 AUG 2025

NEWTON, IOWA

AL-5233 (FAA)

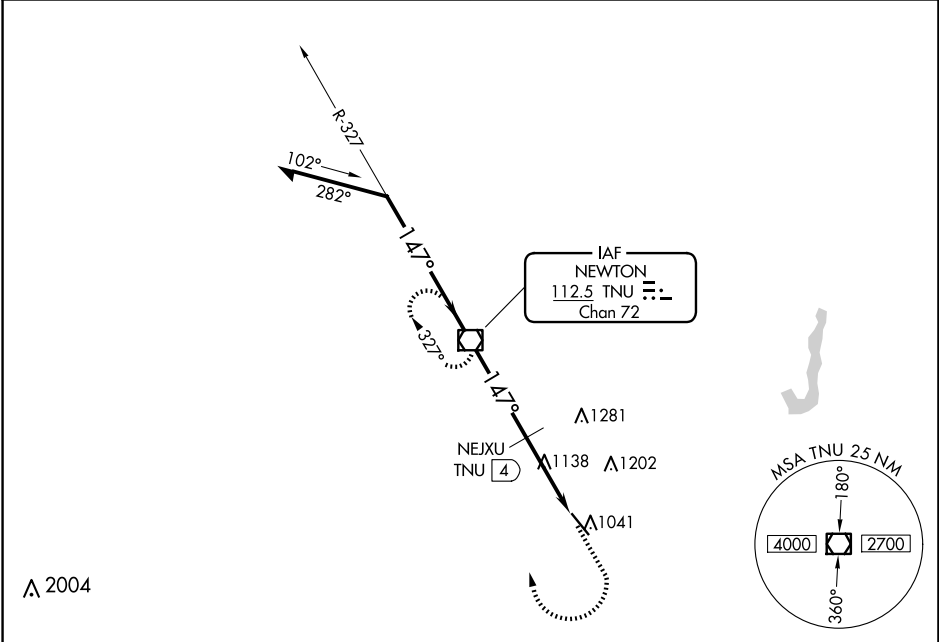
21336

VOR/DME TNU	APP CRS	Rwy Idg	5600
112.5	147°	TDZE	953
Chan 72		Apt Elev	953

VOR RWY 14

NEWTON MUNI-EARL JOHNSON FLD (TNU)

▼ ▲ Rwy 14 helicopter visibility reduction below ¾ SM NA.		MISSED APPROACH: Climb to 2700 then right turn direct TNU VOR/DME and hold.	
AWOS-3 132.275	DES MOINES APP CON 123.9 307.15	CLNC DEL 126.3	UNICOM 122.8 (CTAF) 0



VGSI and descent angles not coincident (VGSI Angle 3.00/TCH 39).		2700	TNU	ELEV 953	TDZE 953
Remain within 10 NM		327°	147°	147° 7.2 NM from FAF	
2700		2700	1460	5600 x 100	
NEJXU TNU 4		2.24° TCH 39	TNU 7.2		
4 NM		3.2 NM			
CATEGORY	A	B	C	D	
S-14	1460-1	507 (600-1)	1460-1⅓ 507 (600-1⅓)	1460-1½ 507 (600-1½)	
CIRCLING	1460-1	507 (600-1)	1520-1½ 567 (600-1½)	1600-2 647 (700-2)	
NEJXU DME MINIMUMS					
S-14	1400-1	447 (500-1)	1400-1⅓ 447 (500-1⅓)	1400-1½ 447 (500-1½)	
CIRCLING	1420-1 467 (500-1)	1440-1 487 (500-1)	1520-1½ 567 (600-1½)	1600-2 647 (700-2)	
REIL Rwy 14 0 MIRL Rwy 14-32 0					
FAF to MAP 7.2 NM					
Knots		60	90	120	150 180
Min:Sec		7:12	4:48	3:36	2:53 2:24

NEWTON, IOWA

Amdt 9C 02DEC21

NEWTON MUNI-EARL JOHNSON FLD (TNU)

41°40'N-93°01'W

VOR RWY 14

NC-3, 10 JUL 2025 to 07 AUG 2025