

PAHOKEE, FLORIDA




AL-5232 (FAA)

25163

WAAS CH 56408 W36A	APP CRS 001°	Rwy Ldg 4069 TDZE 16 Apt Elev 16
--	------------------------	---

RNAV (GPS) RWY 36

PALM BEACH COUNTY GLADES (PHK)

RNP APCH - GPS.		MISSED APPROACH: Climb to 2000 direct WIKIN and hold.	
 VNAV  NA	Baro-VNAV NA. Use PBI altimeter setting; when not received, procedure NA.		
PBI ASOS 123.75	PALM BEACH APP CON 125.2 317.4		UNICOM 122.8 (CTAF) 

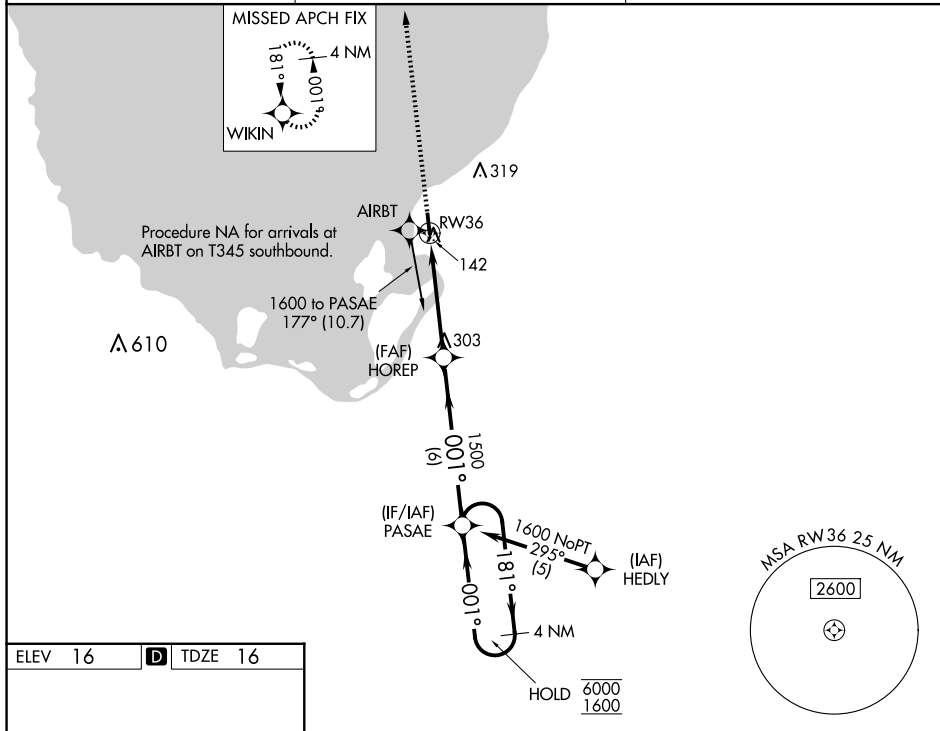


Diagram illustrating the RW36 approach procedure. The diagram shows a 4.5 NM segment from RW36 to HOREP, followed by a 6 NM segment to PASAE. The glidepath is 3.00° with a threshold crossing height (TCH) of 55 feet. The approach is for RW36, which is 1616 x 75 feet. The diagram also shows the 001° heading and the 181° heading. The diagram includes a table with the following data:

CATEGORY	A	B	C	D
LPV DA	471-1 ³ / ₈	455 (500-1 ³ / ₈)		
LNAV/VNAV DA	429-1 ¹ / ₈	413 (500-1 ¹ / ₈)		
LNAV MDA	540-1	524 (600-1)	540-1 ¹ / ₂	524 (600-1 ¹ / ₂)
C CIRCLING	580-1	564 (600-1)	760-2 ¹ / ₄ 744 (800-2 ¹ / ₄)	760-2 ¹ / ₂ 744 (800-2 ¹ / ₂)

PAHOKEE, FLORIDA
Amdt 2 17APR25

26°47'N-80°42'W

PALM BEACH COUNTY GLADES (PHK)
RNAV (GPS) RWY 36

SE-3, 10 JUL 2025 to 07 AUG 2025