

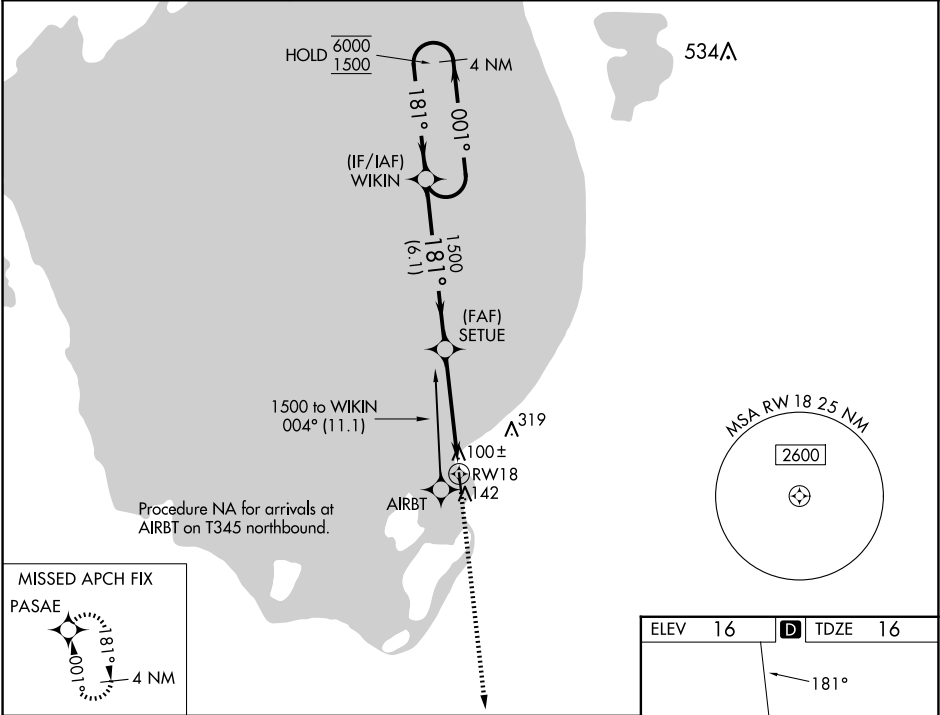




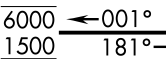
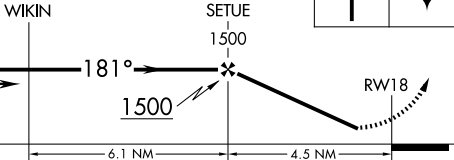

WAAS CH 53408 W18A	APP CRS 181°	Rwy Ldg TDZE 16 Apt Elev 16
--	------------------------	---

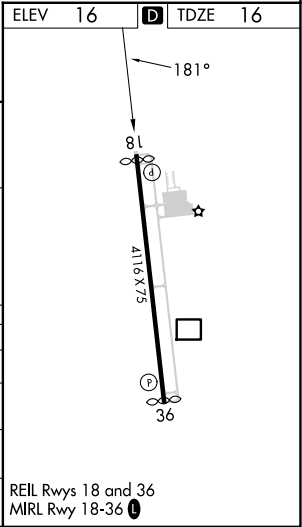
RNAV (GPS) RWY 18
PALM BEACH COUNTY GLADES (PHK)

RNP APCH - GPS.		MISSED APPROACH: Climb to 2000 direct PASAE and hold.
 Rwy 18 helicopter visibility reduction below ¾ SM NA. Use PBI altimeter setting; when not received, procedure NA. Baro-VNAV NA.		

PBI ASOS 123.75	PALM BEACH APP CON 125.2 317.4	UNICOM 122.8 (CTAF) 0
---------------------------	--	---------------------------------



4 NM Holding Pattern		VGSI and RNAV glidepath not coincident (VGSI Angle 3.00°/TCH 44°).		2000 	PASAE 
					
GP 3.00° TCH 55		6.1 NM		4.5 NM	
CATEGORY	A	B	C	D	
LPV DA	358-1		342 (400-1)		
LNAV/ VNAV DA	440-1¼		424 (500-1¼)		
LNAV MDA	440-1	424 (500-1)	440-1¼	424 (500-1¼)	
 CIRCLING	580-1	564 (600-1)	760-2¼ 744 (800-2¼)	760-2½ 744 (800-2½)	



SE-3, 10 JUL 2025 to 07 AUG 2025

SE-3, 10 JUL 2025 to 07 AUG 2025