

LOC/DME I-FLD

**108.3**

Chan 20

APP CRS

**002°**

Rwy Idg

**5941**

TDZE

**795**

Apt Elev

**808**

LOC RWY 36

FOND DU LAC COUNTY (F.LD)

DME required. Radar required for Procedure Entry at ERAGE.

NA

Circling Rwy 9, 27 NA at night. For inop ALS, increase S-LOC 36 Cat A/B visibility to 1 SM, and Cat C/D to 1 1/8 SM. When local altimeter setting not received, use Oshkosh altimeter setting: increase all MDA 40 feet and increase Circling Cat C/D visibility 1/4 SM. VDP NA when using Oshkosh altimeter setting. For inop ALS when using Oshkosh altimeter setting, increase S-LOC 36 Cat A/B visibility to 1 SM.

MALSR

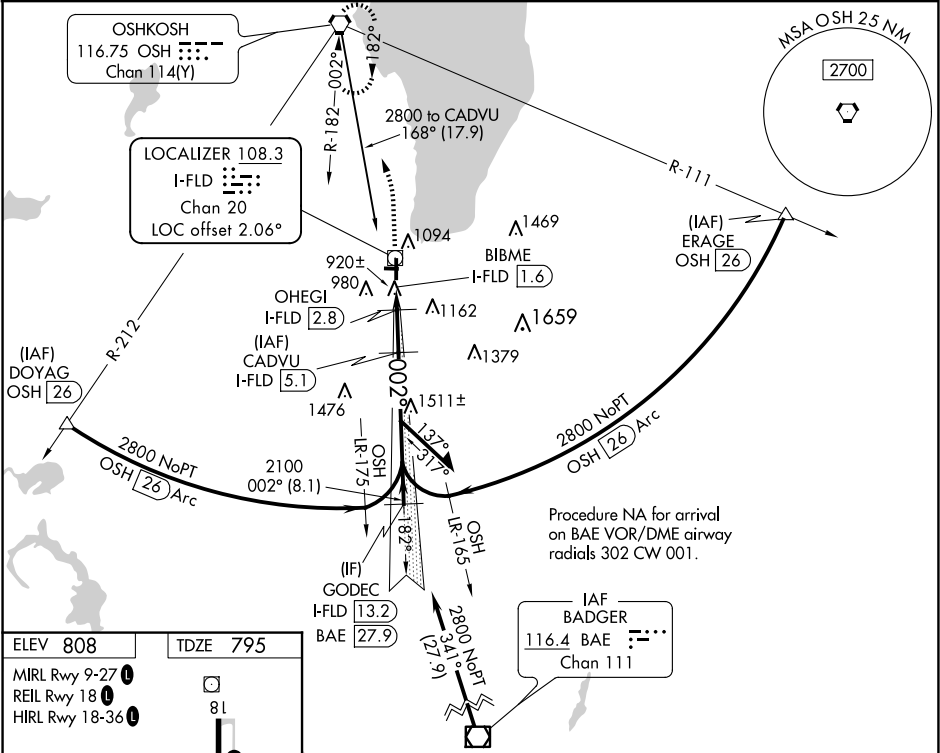
AS

3

MISSED APPROACH

Climb to 2000 then climbing left turn to 3000 direct OSH VORTAC and hold.

ASOS	MILWAUKEE APP CON	UNICOM
134.0	127.0 263.075	123.05 (CTAF) 0



ELEV 808

TDZE 795

MIRL Rwy 9-27

REIL Rwy 18

HIRL Rwy 18-36

81

3602 X 75

0.6% UP

27

5941 X 100

36

002°

2000

3000

OSH

Use I-FLD DME when on the localizer course.

CADYU I-FLD 5.1

OHEGI I-FLD 2.8

BIBME I-FLD 1.6

GODEC I-FLD 13.2

BAE I-FLD 27.9

2100

2800

182°

002°

3.00° TCH 55

\*1400 using Oshkosh altimeter setting.

VGSI and descent angles not coincident (VGSI Angle 3.00/TCH 35).

CATEGORY	A	B	C	D
S-LOC 36	1180-3/4	385 (400-3/4)	1520-2	1520-2 1/4
CIRCLING	1400-1	592 (600-1)	712 (800-2)	712 (800-2 1/4)