

NDB RWY 31

RAY S. MILLER AAF (KRYM)

NDB XCR <u>404</u>	APCH CRS 301°	Rwy Idg 6100 THRE 1146 Arpt Elev 1150
------------------------------	-------------------------	--

[USA]

T *Inop table does not apply to CAT AB. When ALS inop, increase CAT CD vis to 2 miles.

A NA ** Inop table does not apply to CAT A. When ALS inop, increase CAT B vis to 1¼ miles, CAT CD vis to 2 miles.

MALSF

MISSED APPROACH: Climbing right turn to 3000 in XCR NDB holding pattern.

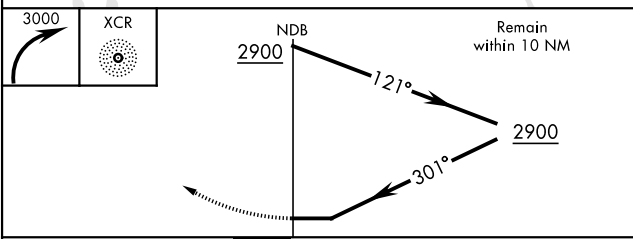
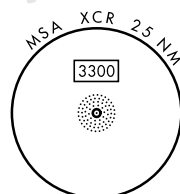
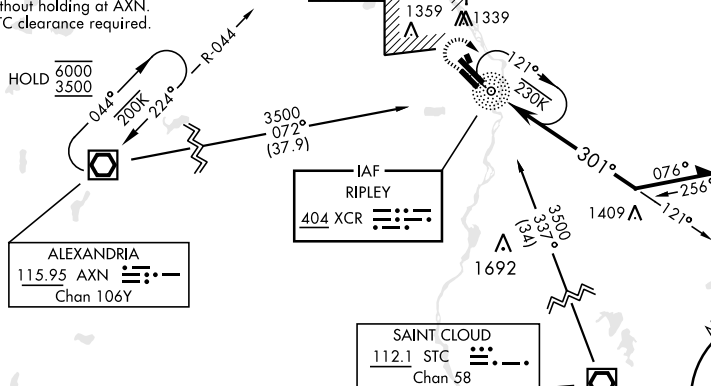
MINNEAPOLIS CENTER 118.05 239.0	TOWER ★ 126.2 0 254.4	CLINC DEL 126.2
------------------------------------	--------------------------	--------------------

Rwy 31 helicopter visibility reduction below $\frac{3}{4}$ mile NA.

Procedure NA when R-4301 is active.

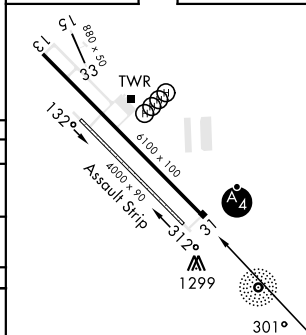
Procedure not authorized via
V510 and V2 northwest bound
without holding at AXN.
ATC clearance required.

When local altimeter setting not received,
use Little Falls altimeter setting.



CATEGORY	A	B	C	D
S-31*	1860-1 714 (800-1)	1860-1 $\frac{3}{4}$ 714 (800-1 $\frac{3}{4}$)		
CIRCLING	1860-1 710 (800-1)	1860-2 710 (800-2)	2080-3 930 (1000-3)	
LITTLE FALLS ALTIMETER SETTING MINIMUMS				
S-31**	1900-1 754 (800-1)	1900-1 $\frac{7}{8}$ 754 (800-1 $\frac{7}{8}$)		
CIRCLING	1900-1 750 (800-1)	1900-1 $\frac{1}{4}$ 750 (800-1 $\frac{1}{4}$)	1900-2 $\frac{1}{4}$ 750 (800-2 $\frac{1}{4}$)	2120-3 970 (1000-3)

ELEV	1150		THRE	1146
------	------	--	------	------

HJRL Rwy 13-31 **L**

CAMP RIPLEY, MINNESOTA

46°05'N-94°22'W

RAY S. MILLER AAF (KRYM)

Amdt 4 05OCT23

NDB RWY 31

NC-1, 10 JUL 2025 to 07 AUG 2025

NC-1, 10 JUL 2025 to 07 AUG 2025