

ILS or LOC RWY 31

LOC I-RYM <b>111.1</b> Chan <b>48</b>	APCH CRS <b>312°</b>	Rwy Idg TDZE <b>1146</b> Arpt Elev <b>1150</b>
---	-------------------------	--

[USA]

RAY S. MILLER AAF (KRYM)

ADF, DME required. RADAR required for entry at STC VOR/DME.

- ▼

\* When ALS inop, increase CAT CD vis to 1¼ miles.

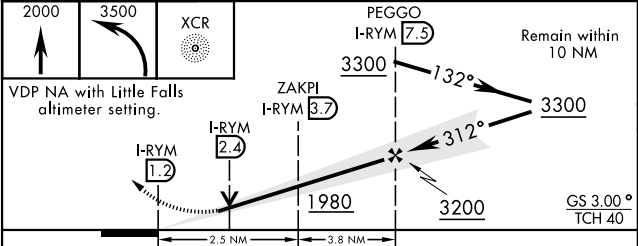
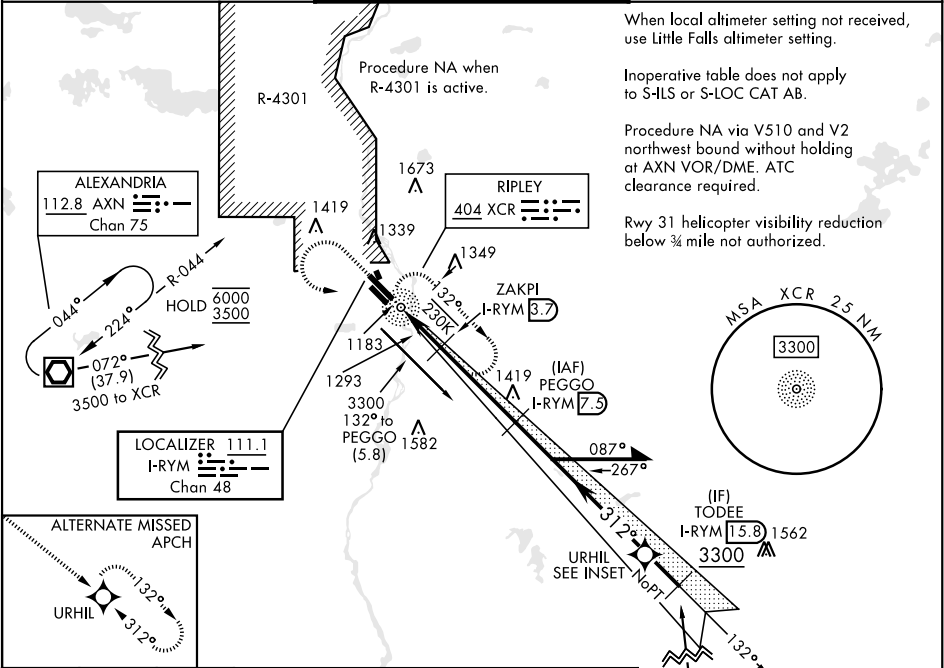
▲

\*\* When ALS inop, increase CAT CD vis to 1½ miles.

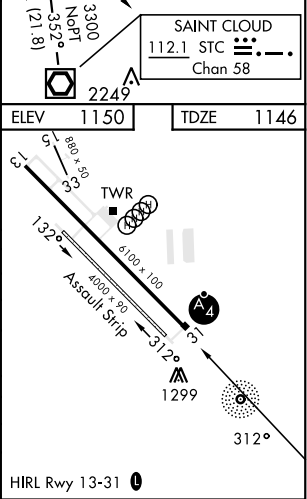


MISSED APPROACH: Climb to 2000, then climbing left turn to 3500 direct XCR NDB and hold. Continue climb in hold to 3500.

MINNEAPOLIS CENTER <b>118.05 239.0</b>	MILLER TOWER ★ <b>126.2 0 254.4</b>	CLNC DEL <b>126.2</b>
---	--	--------------------------



CATEGORY	A	B	C	D
S-ILS 31	1396-1		250	(300-1)
S-LOC 31*	1580-1		434	(500-1)
CIRCLING	1640-1	1660-1	1720-1½	2080-3
	490 (500-1)	510 (600-1)	570 (600-1½)	930 (1000-3)
LITTLE FALLS ALTIMETER SETTING MINIMUMS				
S-ILS 31	1420-1		274	(300-1)
S-LOC 31**	1620-1	474 (500-1)	1620-1½	474 (500-1½)
CIRCLING	1680-1	1700-1	1760-1¾	2120-3
	530 (600-1)	550 (600-1)	610 (700-1¾)	970 (1000-3)



ILS or LOC RWY 31

NC-1, 10 JUL 2025 to 07 AUG 2025

NC-1, 10 JUL 2025 to 07 AUG 2025