

WAAS CH 56347 W28A	APP CRS 284°	Rwy Idg 3000 TDZE 150 Apt Elev 150
--	------------------------	---

RNAV (GPS) RWY 28
TIPTON (FME)

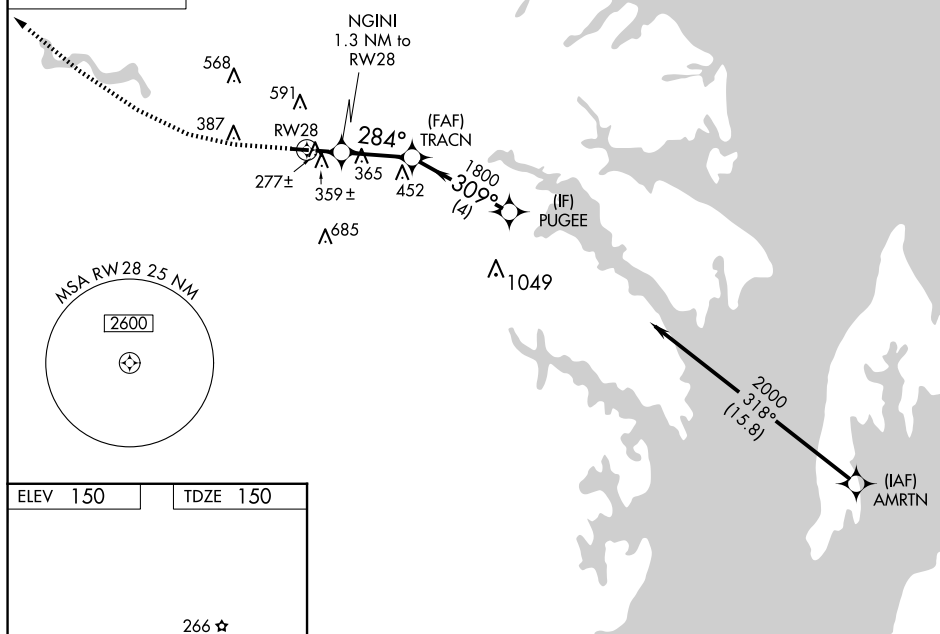
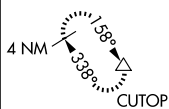
RNP APCH - GPS.

T Rwy 28 helicopter visibility reduction below $\frac{3}{4}$ SM NA. Circling Rwy 10 NA at night.

MISSED APPROACH: Climb to 570 then climbing right turn to 2000 direct CUTOP and hold.

AWOS-3 123.925	POTOMAC APP CON 119.7 290.475	UNICOM 123.05 (CTAF) 0
--------------------------	---	----------------------------------

MISSED APCH FIX



REIL Rwy 10 and 28 **L**
 MIRL Rwy 10-28 **L**

570
2000
CUTUP
△

VGS1 and descent angles not coincident
(VGS1 Angle 4.00/TCH 57).

NGINI
1.3 NM to
RW28

TRACN

PUGEE

2000

309°

284°

1800

≤ 4.00°
TCH 40

720

RW28

1.3 NM

2.5 NM

4 NM

CATEGORY	A	B	C	D
LP MDA	540-1	390 (400-1)	NA	
LNAV MDA	620-1	470 (500-1)	NA	
CIRCLING	820-1 670 (700-1)	960-1 810 (900-1)	NA	