

LOC/DME I-BQG

110.7

Chan 44

APP CRS

144°

Rwy Idg

6997

TDZE

22

Apt Elev

22

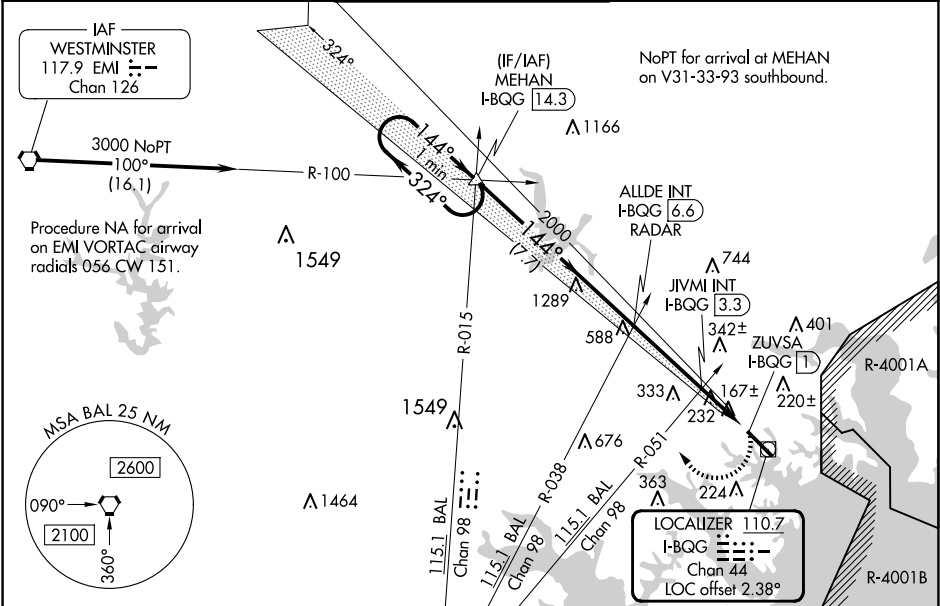
LOC RWY 15

MARTIN STATE (MTN)

When local altimeter setting not received, use Baltimore/Washington Intl Thurgood Marshall altimeter setting; increase all MDA 60 feet and increase S-15 Cat A and Circling Cats C and D visibility ¼ SM and increase JIVMI fix minimums S-15 Cats C and D visibility ½ SM and Circling Cat C and D visibility ¼ SM. Rwy 15 helicopter visibility reduction below ¾ SM NA. Circling Cat D NA northeast of Rwy 15-33.

MISSED APPROACH: Climbing right turn to 3000 on heading 312° and BAL VORTAC R-015 to MEHAN INT/I-BQG 14.3 DME and hold.

ATIS 124.925	POTOMAC APP CON 119.0 282.275	MARTIN TOWER ★ 121.3(CTAF) 254.425	GND CON 121.8 253.4	UNICOM 122.95
-----------------	----------------------------------	---------------------------------------	------------------------	------------------



*920 when using Baltimore/Washington Intl Thurgood Marshall altimeter setting.

One Minute Holding Pattern

Visual Segment - Obstacles.

MEHAN I-BQG 14.3

ALLDE INT I-BQG 6.6 RADAR

JIVMI INT I-BQG 3.3

ZUVSA I-BQG 1

3000

324°

144°

2000

*860

7.7 NM

3.3 NM

1.3 NM

1 NM

CATEGORY	A	B	C	D
S-15	860-1 838 (900-1)	860-1¼ 838 (900-1¼)	860-2½ 838 (900-2½)	838 (900-2½)
CIRCLING	860-1¼ 838 (900-1¼)	838 (900-1¼)	860-2½ 838 (900-2½)	860-2¾ 838 (900-2¾)
JIVMI FIX MINIMUMS (DUAL VOR RECEIVERS OR DME REQUIRED)				
S-15	500-1	478 (500-1)	500-1¾	478 (500-1¾)
CIRCLING	560-1	538 (600-1)	680-1¾ 658 (700-1¾)	740-2¼ 718 (800-2¼)

ELEV 22

TDZE 22

HIRL Rwy 15-33

REIL Rws 15 and 33

144°

TWR 98

6997 X 180

33

Rwy 33 Idg 8100' (Military Operations Only)

Rwy 15 take-off 8100' (Military Operations Only)

FAF to MAP 5.6 NM

Knots	60	90	120	150	180
Min:Sec	5:36	3:44	2:48	2:14	1:52