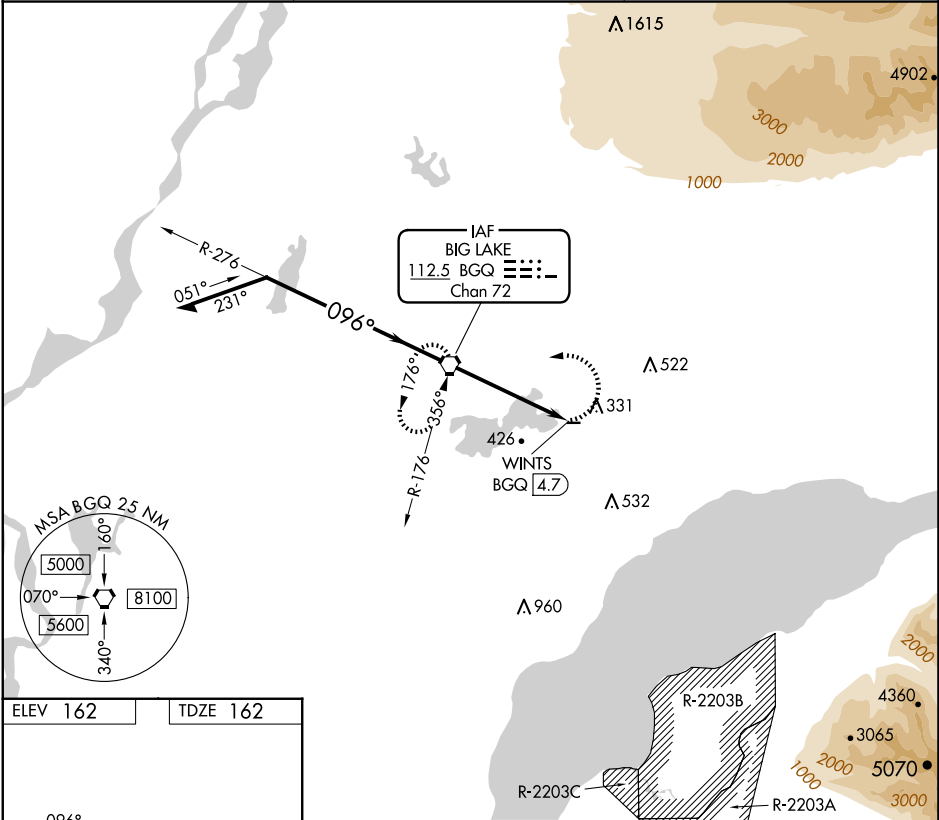


VORTAC BGQ	APP CRS	Rwy Idg	2450
112.5	096°	TDZE	162
Chan 72		Apt Elev	162

VOR RWY 7
BIG LAKE (BGQ) (PAGQ)

<div><div>Procedure NA at night. Rwy 7 helicopter visibility reduction below 1 SM NA. Use Anchorage altimeter setting.</div></div>	MISSED APPROACH: Climbing left turn to 2000 direct BGQ VORTAC and hold, climb-in-hold to 2000.
--	--

ANC ASOS 135.5	ANCHORAGE APP CON 118.6	CTAF 122.80
-------------------	----------------------------	----------------



ELEV 162	TDZE 162
MIRL Rwy 7-25	
FAF to MAP 4.7 NM	
Knots	60 90 120 150 180
Min:Sec	4:42 3:08 2:21 1:53 1:34

Remain within 10 NM		BGQ VORTAC	2000	BGQ
2000		276°	096°	
1700		3.05°	TCH 40	WINTS BGQ 4.7
4.7 NM				
CATEGORY	A	B	C	D
S-7	980-1 818 (900-1)	980-1¼ 818 (900-1¼)	980-2½ 818 (900-2½)	NA
CIRCLING	980-1¼ 818 (900-1¼)		980-2½ 818 (900-2½)	NA