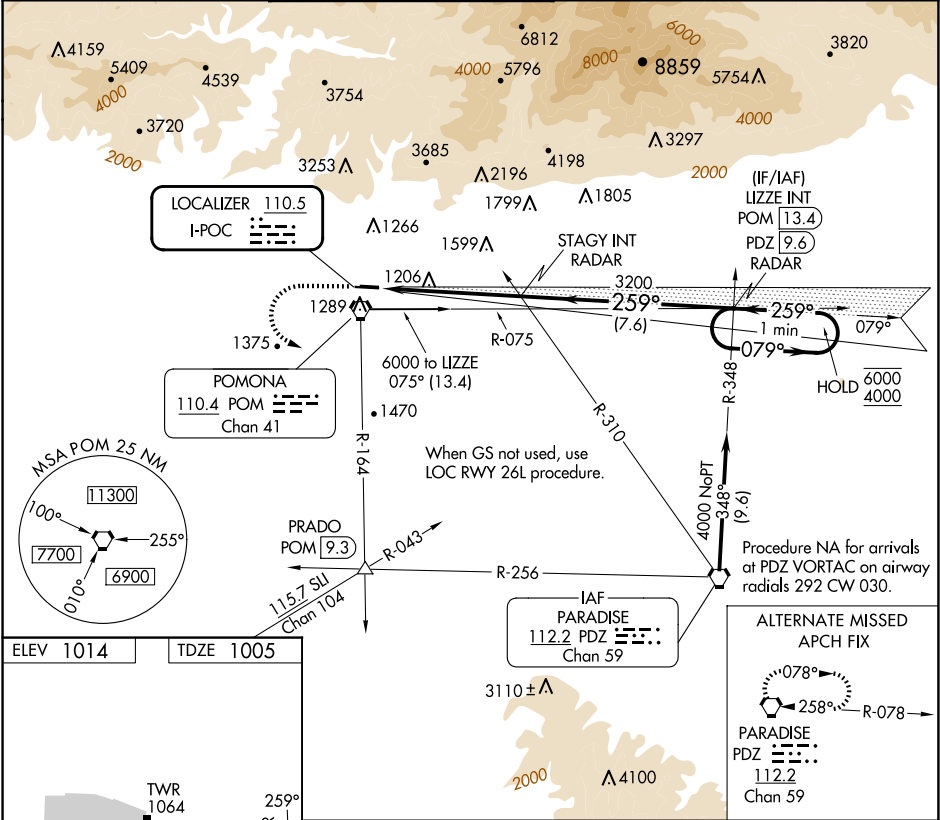


LOC	I-POC	APP CRS	Rwy Idg	4151
110.5		259°	TDZE	1005
			Apt Elev	1014

ILS RWY 26L
BRACKETT FLD (POC)

<p>⚠ Rwy 26L helicopter visibility reduction below 3/4 SM NA. ⚠ When local altimeter setting not received, use Ontario Intl altimeter setting and increase DA to 1364.</p>	<p>MISSED APPROACH: Climb to 2100 then climbing left turn to 4000 on POM VORTAC R-164 to PRADO INT/POM 9.3 DME.</p>
--	---

ATIS 124.4	SOCAL APP CON 125.5 349.0	BRACKETT TOWER★ RWY 8R/26L 118.2 (CTAF) RWY 8L/26R 133.3	GND CON 125.0	CLNC DEL 121.875	UNICOM 122.95
----------------------	-------------------------------------	--	-------------------------	----------------------------	-------------------------



ELEV 1014	TDZE 1005	<p>REIL Rwy 8R and 26L MIRL Rwy 8R-26L</p>			
<p>2100 4000 PRADO POM R-164 STAGY INT RADAR LIZZE INT PDZ 9.6 RADAR</p>		<p>One Minute Holding Pattern</p>			
<p>5.2 NM</p>		<p>7.6 NM</p>		<p>GS 3.92° *TCH 20</p>	
CATEGORY	A	B	C	D	
S-ILS 26L	1332-1	327 (400-1)	NA		

SW-3, 10 JUL 2025 to 07 AUG 2025

SW-3, 10 JUL 2025 to 07 AUG 2025