

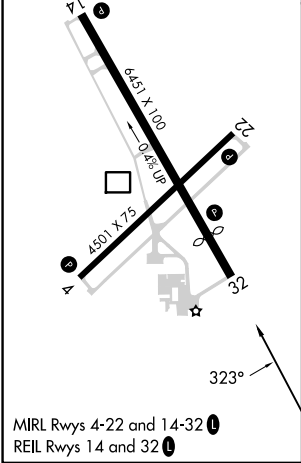
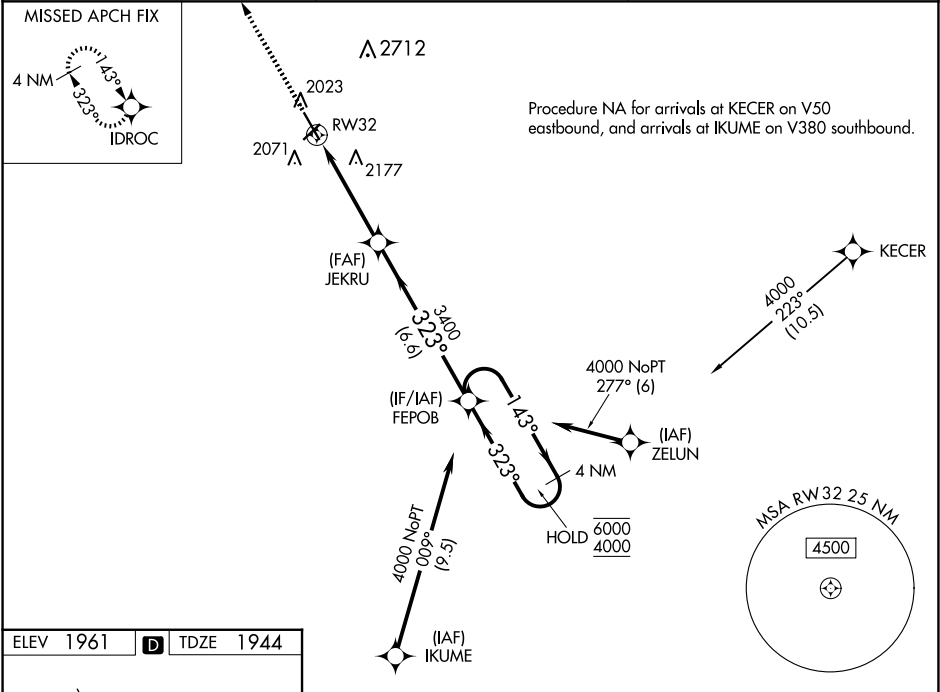
WAAS CH <b>63223</b> <b>W32A</b>	APP CRS <b>323°</b>	Rwy Idg TDZE <b>1944</b> Apt Elev <b>1961</b>
--	------------------------	---

RNAV (GPS) RWY 32

HASTINGS MUNI (HSI)

RNP APCH.	MISSED APPROACH: Climb to 4000 direct IDROC and hold.
For uncompensated Baro-VNAV systems, LNAV/VNAV NA below -18°C or above 54°C. Circling NA for Cat D east of Rwy 14-32.	

ASOS <b>120.525</b>	MINNEAPOLIS CENTER <b>119.4 278.8</b>	UNICOM <b>122.8 (CTAF) 0</b>
------------------------	--	---------------------------------



4000

↑

IDROC

FEPOB

4 NM Holding Pattern

\* LNAV only.

\* 1.3 NM to RW32

RW32

1.3 NM

3.2 NM

6.6 NM

JEKRU

3400

323°

143°

323°

6000

4000

GP 3.00°

TCH 42

CATEGORY	A	B	C	D
LPV DA	2194-7⁄8		250 (300-7⁄8)	
LNAV/VNAV DA	2386-13⁄8		442 (500-13⁄8)	
LNAV MDA	2380-1	436 (500-1)	2380-1¼	436 (500-1¼)
CIRCLING	2380-1 419 (500-1)	2540-1 579 (600-1)	2540-1½ 579 (600-1½)	2540-2 579 (600-2)