

WAAS CH <b>57904</b> <b>W20A</b>	APP CRS <b>202°</b>	Rwy Idg TDZE Apt Elev	<b>8012</b> <b>468</b> <b>472</b>
--	------------------------	-----------------------------	---

RNAV (GPS) RWY 20

VETERANS AIRPORT OF SOUTHERN ILLINOIS (MWA)

RNP APCH.

⚠

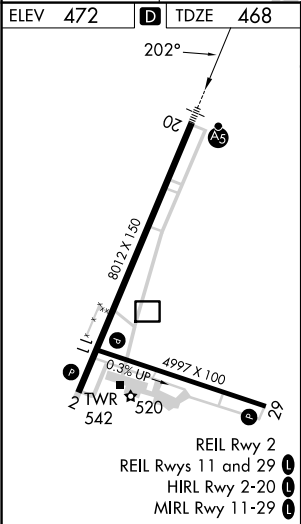
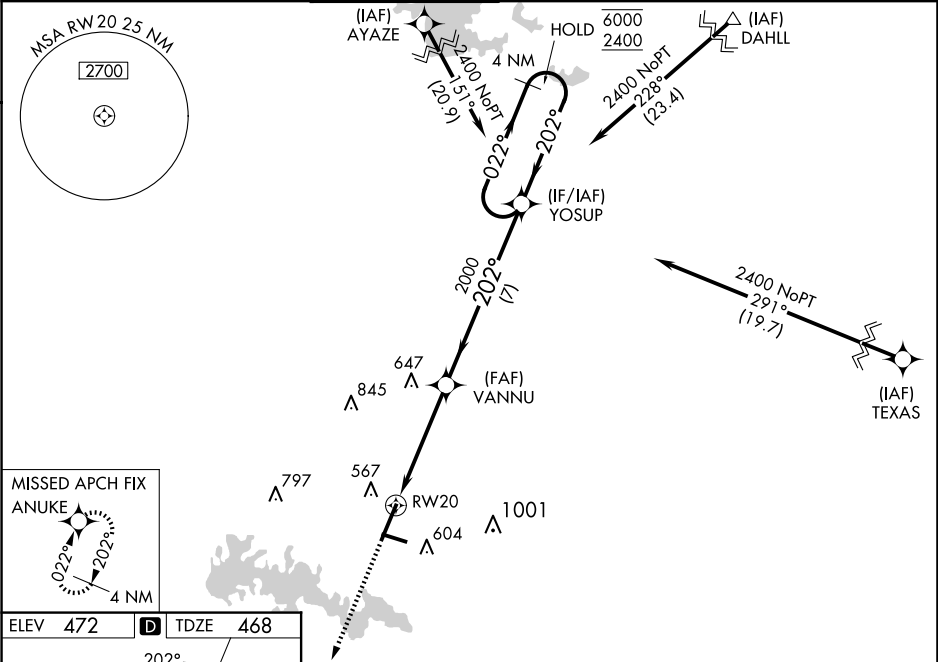
Circling Rwy 11 NA at night. For uncompensated Baro-VNAV systems, LNAV/VNAV NA below -15° C or above 54° C. For inop ALS, increase LNAV/VNAV all Cats visibility to ¾ SM and LNAV Cats C/D visibility to 1 ½ SM.


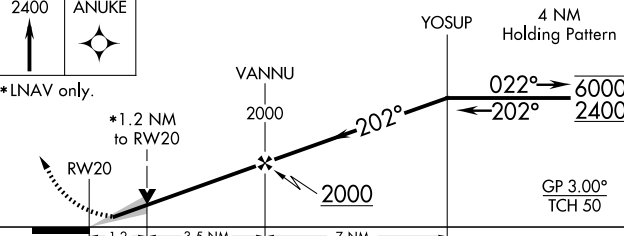
MALSR

MISSED APPROACH:

Climb to 2400 direct ANUKE and hold.

AWOS-3P <b>119.675</b>	KANSAS CITY CENTER <b>127.475 346.275</b>	MARION TOWER★ <b>128.4</b> (CTAF)	CLNC DEL <b>127.475</b> (When twr closed)	GND CON <b>121.7</b>	UNICOM <b>122.95</b>
---------------------------	--	--------------------------------------	--	-------------------------	-------------------------



2400 ↑	ANUKE 																																	
* LNAV only.																																		
<table border="1"><thead><tr><th>CATEGORY</th><th>A</th><th>B</th><th>C</th><th>D</th></tr></thead><tbody><tr><td>LPV DA</td><td colspan="5">668-½ 200 (200-½)</td></tr><tr><td>LNAV/VNAV DA</td><td colspan="5">773-½ 305 (400-½)</td></tr><tr><td>LNAV MDA</td><td colspan="2">880-½ 412 (500-½)</td><td colspan="3">880-¾ 412 (500-¾)</td></tr><tr><td>CIRCLING</td><td>920-1 448 (500-1)</td><td>940-1 468 (500-1)</td><td>1040-1½ 568 (600-1½)</td><td colspan="2">1340-2¾ 868 (900-2¾)</td></tr></tbody></table>						CATEGORY	A	B	C	D	LPV DA	668-½ 200 (200-½)					LNAV/VNAV DA	773-½ 305 (400-½)					LNAV MDA	880-½ 412 (500-½)		880-¾ 412 (500-¾)			CIRCLING	920-1 448 (500-1)	940-1 468 (500-1)	1040-1½ 568 (600-1½)	1340-2¾ 868 (900-2¾)	
CATEGORY	A	B	C	D																														
LPV DA	668-½ 200 (200-½)																																	
LNAV/VNAV DA	773-½ 305 (400-½)																																	
LNAV MDA	880-½ 412 (500-½)		880-¾ 412 (500-¾)																															
CIRCLING	920-1 448 (500-1)	940-1 468 (500-1)	1040-1½ 568 (600-1½)	1340-2¾ 868 (900-2¾)																														

EC-3, 10 JUL 2025 to 07 AUG 2025

EC-3, 10 JUL 2025 to 07 AUG 2025