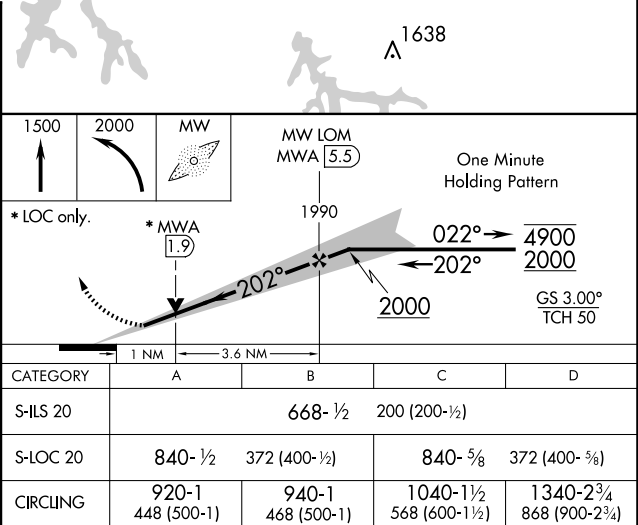
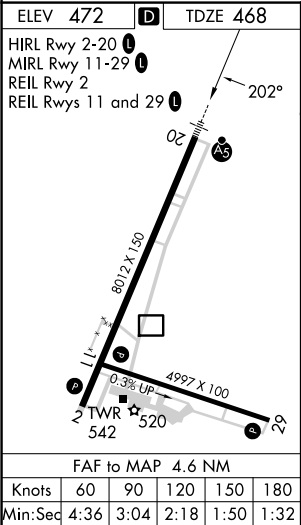
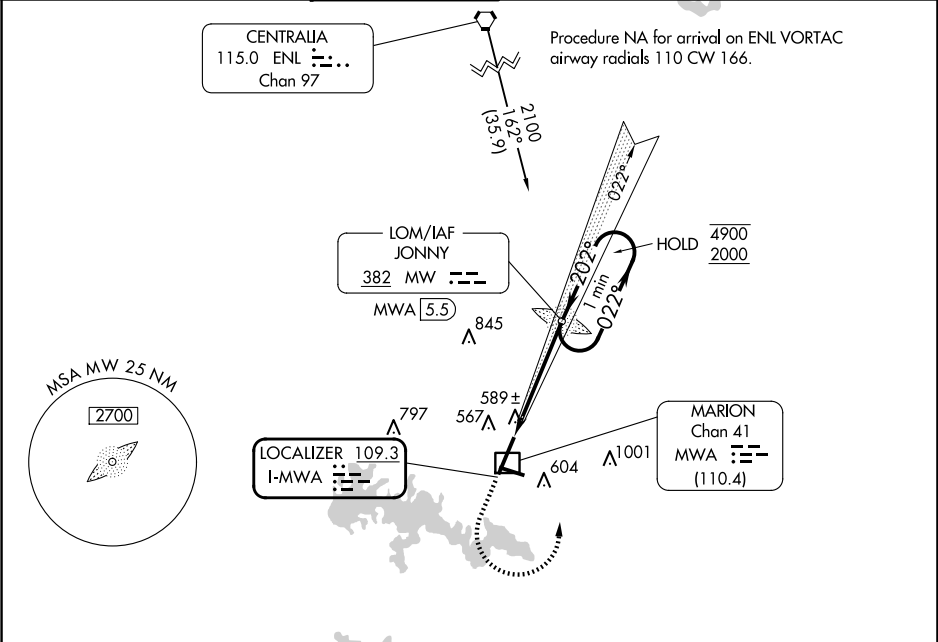


LOC I-MWA 109.3	APP CRS 202°	Rwy Idg 8012 TDZE 468 Apt Elev 472
---------------------------	------------------------	---

ILS or LOC RWY 20

VETERANS AIRPORT OF SOUTHERN ILLINOIS(MWA)

DME required. ADF required.		MALSR	MISSED APPROACH: Climb to 1500 then climbing left turn to 2000 direct JONNY LOM/MWA 5.5 DME and hold.		
▼ Circling Rwy 11 NA at night. For inop ALS, increase S-LOC 20 ▲ Cat C/D visibilities to 1 SM.					
AWOS-3P 119.675	KANSAS CITY CENTER 127.475 346.275	MARION TOWER★ 128.4 (CTAF) 0	CLNC DEL 127.475 (When twr closed)	GND CON 121.7	UNICOM 122.95



EC-3, 10 JUL 2025 to 07 AUG 2025

EC-3, 10 JUL 2025 to 07 AUG 2025