

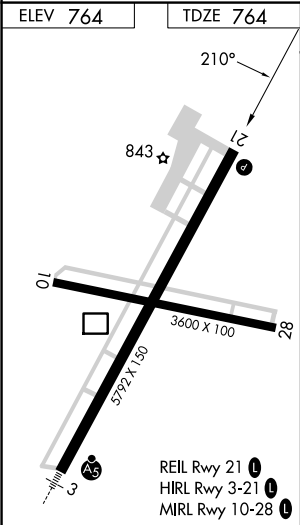
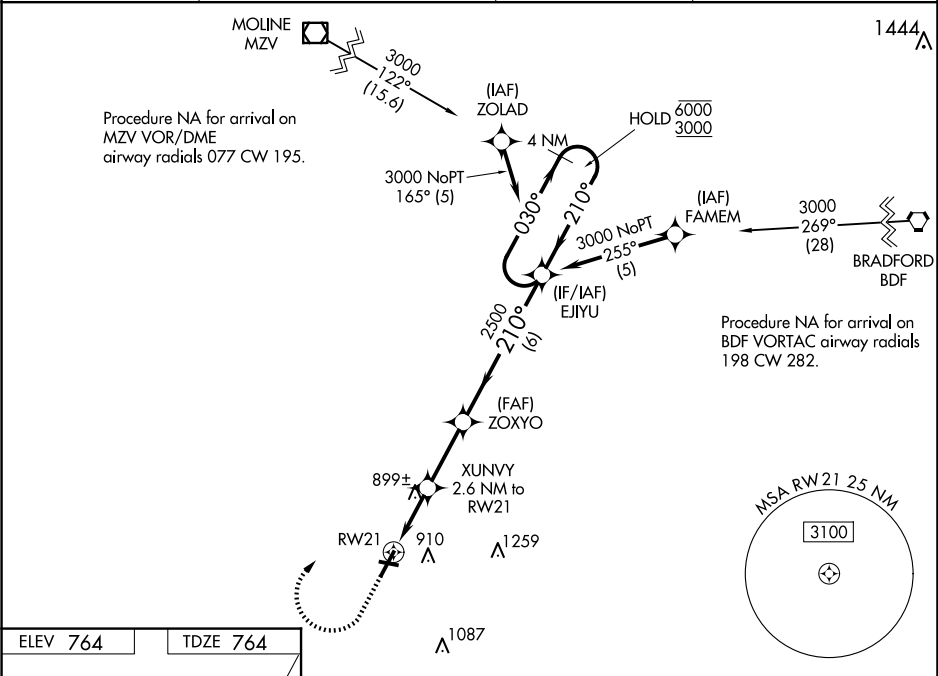
WAAS CH <b>50428</b> <b>W21A</b>	APP CRS <b>210°</b>	Rwy Idg TDZE <b>764</b> Apt Elev <b>764</b>	<b>5792</b> <b>764</b> <b>764</b>
--	------------------------	---	---

RNAV (GPS) RWY 21

GALESBURG MUNI (GBG)

RNP APCH - GPS.	MISSED APPROACH: Climb to 1700 then climbing right turn to 3000 direct EJYU and hold.
For uncompensated Baro-VNAV systems, LNAV/VNAV NA below -16°C or above 54°C.	

AWOS-3 <b>118.975</b>	QUAD CITY APP CON ★ <b>133.275 257.8</b>	CLNC DEL <b>120.7</b>	UNICOM <b>123.0</b> (CTAF) <b>0</b>
--------------------------	---	--------------------------	--



1700 3000 EJYU				
4 NM Holding Pattern				
XUNVY 2.6 NM to RW21				
1.1 NM to RW21				
RW21				
1.1 1.5 2.7 NM				
1640 2500 2500				
EJYU				
030° 6000 210° 3000				
GP 3.00° TCH 55				
CATEGORY	A	B	C	D
LPV DA	964-¾ 200 (200-¾)			
LNAV/VNAV DA	1060-7/8 296 (300-7/8)			
LNAV MDA	1160-1	396 (400-1)	1160-1 1/8	396 (400-1 1/8)
CIRCLING	1220-1	456 (500-1)	1380-1 3/4	1620-2 3/4
			616 (700-1 3/4)	856 (900-2 3/4)