

IRONWOOD, MICHIGAN

AL-5213 (FAA)

25163

VOR/DME IWD <b>108.8</b> Chan <b>25</b>	APP CRS <b>079°</b>	Rwy Ldg <b>6501</b> TDZE <b>1230</b> Apt Elev <b>1230</b>
---	------------------------	---

APP CRS  
079°

Rwy Ldg	<b>6501</b>
TDZE	<b>1230</b>
Apt Elev	<b>1230</b>

VOR RWY 9  
GOGEBIC/IRON COUNTY (IWD)

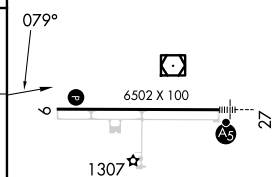
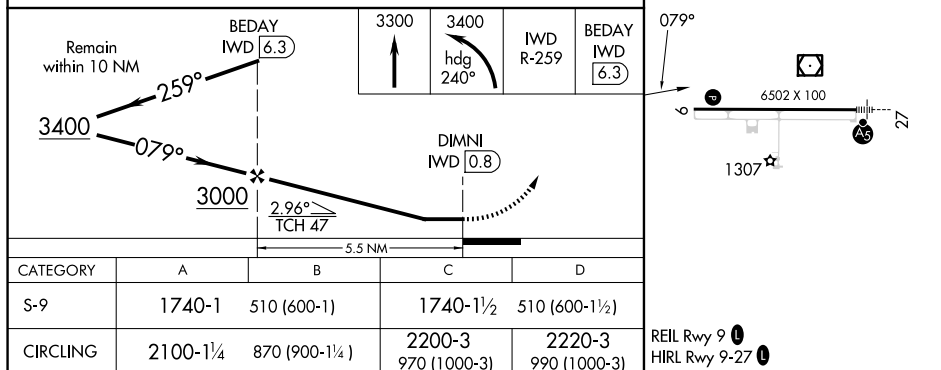
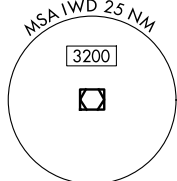
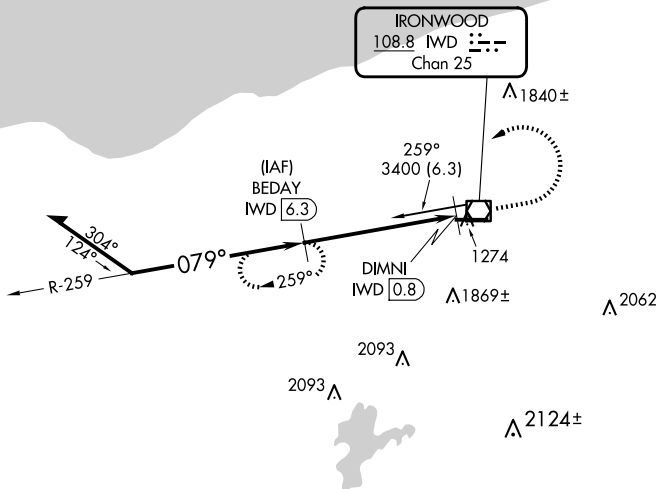
DME required.

**T** Rwy 9 helicopter visibility reduction below  $\frac{3}{4}$  SM NA. When local altimeter setting not received, use ASX altimeter setting: increase all MDAs 140 feet and S-9 visibility Cat C  $\frac{1}{4}$  SM and Cat D  $\frac{1}{2}$  SM, and Circling visibility Cat B  $\frac{1}{4}$  SM.

**MISSED APPROACH:** Climb to 3300 then climbing left turn to 3400 on heading 240° and IWD R-259 to BEDAY/6.3 DME and hold.

AWOS-3PT  
**125.175**

MINNEAPOLIS CENTER  
133.55

UNICOM  
122.8 (CTAF) **L**

CATEGORY	A	B	C	D
S-9	1740-1	510 (600-1)	1740-1½	510 (600-1½)
CIRCLING	2100-1¼	870 (900-1¼)	2200-3 970 (1000-3)	2220-3 990 (1000-3)

REIL Rwy 9 **L**  
HIRL Rwy 9-27 **L**

IRONWOOD, MICHIGAN  
Amdt 13C 26DEC24

46°32'N-90°08'W

GOGEBIC/IRON COUNTY (IWD)  
VOR Rwy 9