

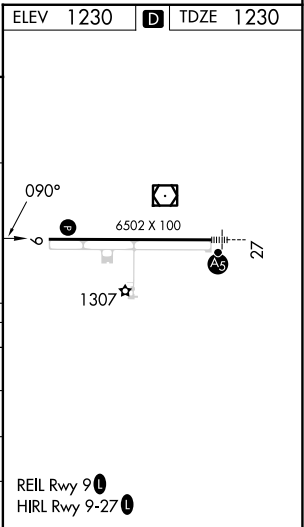
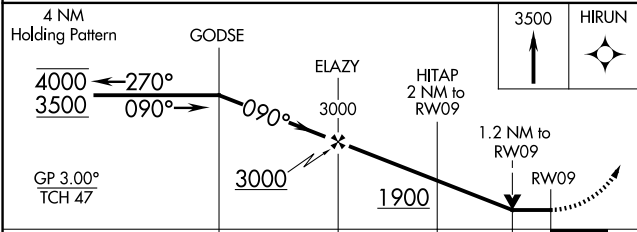
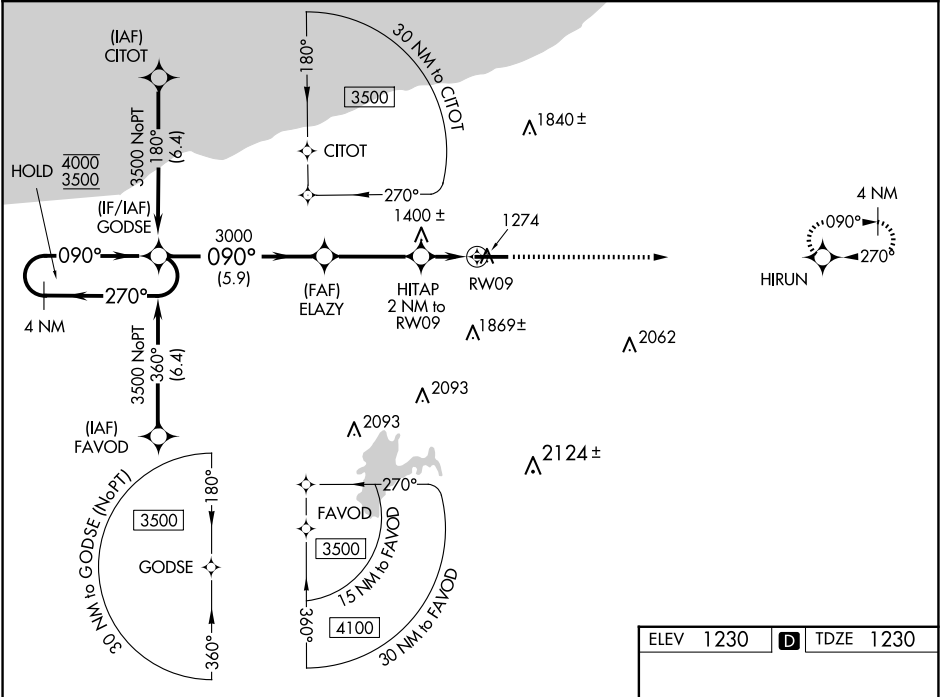
WAAS CH <b>86747</b> <b>W09A</b>	APP CRS <b>090°</b>	Rwy Ldg TDZE Apt Elev <b>6501</b> <b>1230</b> <b>1230</b>
--	------------------------	--

RNAV (GPS) RWY 9

GOGEBIC/IRON COUNTY (IWD)

RNP APCH - GPS.		MISSED APPROACH: Climb to 3500 direct HIRUN and hold.
Rwy 9 helicopter visibility reduction below ¾ SM NA. For uncompensated Baro-VNAV systems, LNAV/VNAV NA below -17°C or above 54°C.		
-26°C		

AWOS-3PT <b>125.175</b>	MINNEAPOLIS CENTER <b>133.55</b>	UNICOM <b>122.8 (CTAF)</b>
----------------------------	-------------------------------------	-------------------------------



CATEGORY	A	B	C	D
LPV DA		1480-¾	250 (300-¾)	
LNAV/VNAV DA		1630-1½	400 (400-1½)	
LNAV MDA	1660-1	430 (500-1)	1660-1¼	430 (500-1¼)
CIRCLING	2100-1¼	870 (900-1¼)	2200-3 970 (1000-3)	2220-3 990 (1000-3)