

APCH CRS 139°	Rwy Idg 3025 TDZE 12 Arpt Elev 12
-------------------------	--

[USA]

FELKER AAF (KFAF)

RNP APCH - GPS

ODALS

MISSED APPROACH: Climbing left turn to 2000 direct HUMAL and hold.

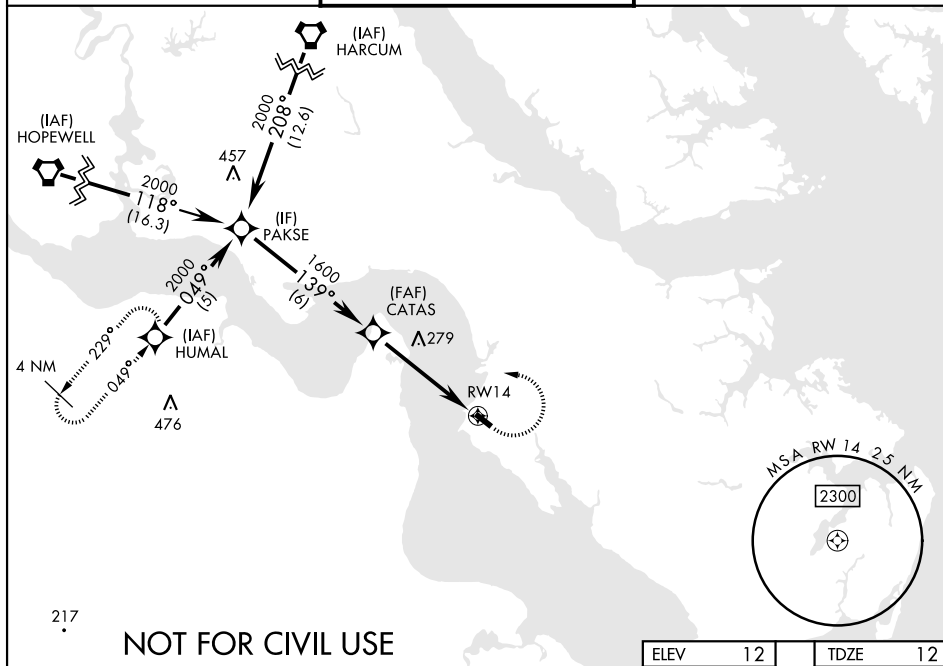
Procedure NA at night.

When local altimeter setting not received, use Newport News/Williamsburg Intl altimeter setting. Rwy 14 helicopter visibility reduction below 1 SM NA.

NORFOLK APP CON
125.7 335.625

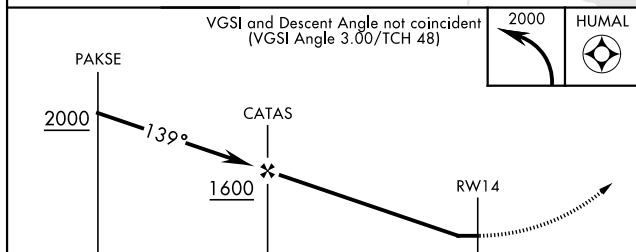
TOWER ★
126.3 (CTAF) **L** 269.25

GND CON	
121.35	229.4



NOT FOR CIVIL USE

ELEV	12		TDZE	12
------	----	--	------	----



		← 4.8 NM →			
CATEGORY	A		B	C	D
LNAV MDA	480-1 468 (500-1)		NA		
CIRCLING	480-1 468 (500-1)	560-1 548 (600-1)		NA	
NEWPORT NEWS / WILLIAMSBURG INTL ALTIMETER					
LNAV MDA	500-1 488 (500-1)		NA		
CIRCLING	500-1 488 (500-1)	580-1 568 (600-1)		NA	

