

| | | | |
|--|------------------------|---|-------------|
| WAAS CH 90223 W05A | APP CRS 055° | Rwy Idg TDZE 904 Apt Elev 921 | 5004 |
|--|------------------------|---|-------------|

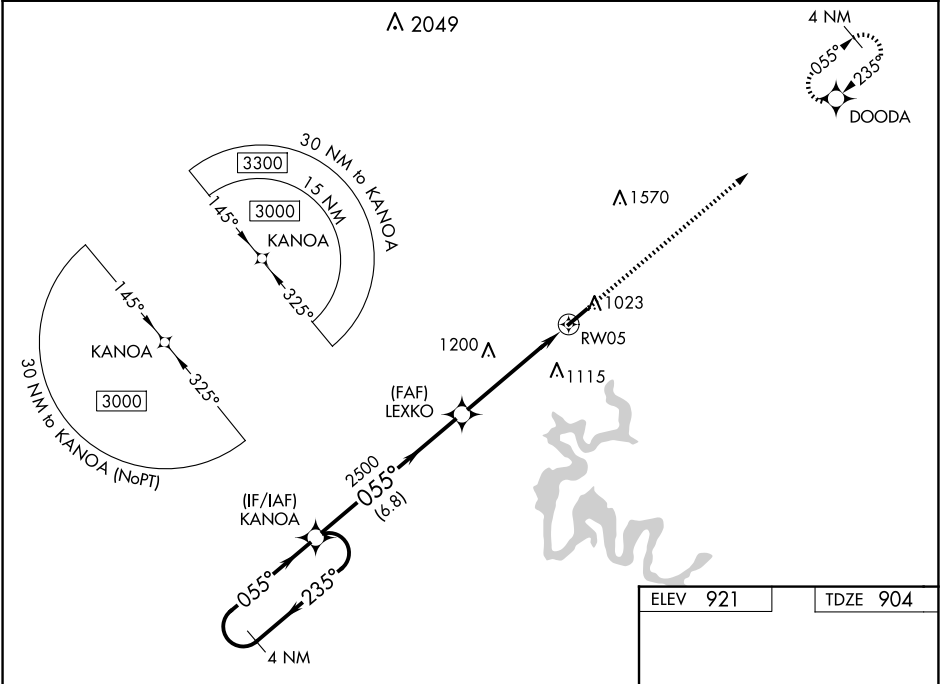
RNAV (GPS) RWY 5

TAYLOR COUNTY (AAS)

Baro-VNAV NA when using Somerset altimeter setting. For uncompensated Baro-VNAV systems, LNAV/VNAV NA below -16°C (4°F) or above 54°C (130°F). DME/DME RNP-0.3 NA. When local altimeter setting not received, use Somerset altimeter setting: increase all DA 89 feet and all MDA 100 feet; increase LPV all Cats visibility ¼ mile, increase LNAV/VNAV all Cats visibility ⅓ mile, increase LNAV Cats C and D visibility ¼ mile, and increase Circling Cat C visibility ¼ mile and Cat D visibility ½ mile. Helicopter visibility reduction below ¾ SM NA. Night landing: Rwy 5 NA for Cat C and D aircraft.

MISSED APPROACH:
Climb to 3000 direct DOODA and hold.

| | | |
|--------------------------|--|---------------------------------|
| AWOS-3 121.125 | INDIANAPOLIS CENTER 124.625 353.65 | UNICOM 122.7 (CTAF) 0 |
|--------------------------|--|---------------------------------|



4 NM Holding Pattern

VGSI and RNAV glidepath not coincident (VGSI Angle 3.50/TCH 48).

3000 DOODA

GP 3.00° TCH 40

2500

6.8 NM

5 NM

5004 x 75

1.0% UP

055°

| CATEGORY | A | B | C | D |
|--------------|----------------------|----------------------|----------------------|----------------------|
| LPV DA | 1154-1 250 (300-1) | | | |
| LNAV/VNAV DA | 1389-1¾ 485 (500-1¼) | | | |
| LNAV MDA | 1340-1 436 (500-1) | 1340-1¼ 436 (500-1¼) | | |
| CIRCLING | 1380-1 459 (500-1) | 1400-1 479 (500-1) | 1480-1½ 559 (600-1½) | 1660-2¼ 739 (800-2¼) |

MIRL Rwy 5-23 0
REIL Rwys 5 and 23 0