

WAAS

CH **58230**

W11A

APP CRS

113°

Rwy Idg

5500

TDZE

1574

Apt Elev

1574

RNAV (GPS) RWY 11

WORTHINGTON MUNI (OTG)

RNP APCH - GPS.

▼

▲

For uncompensated Baro-VNAV systems, LNAV/VNAV NA below -23°C or above 54°C.

MISSED APPROACH: Climb to 3300 direct CUKMO and hold.

AWOS-3PT

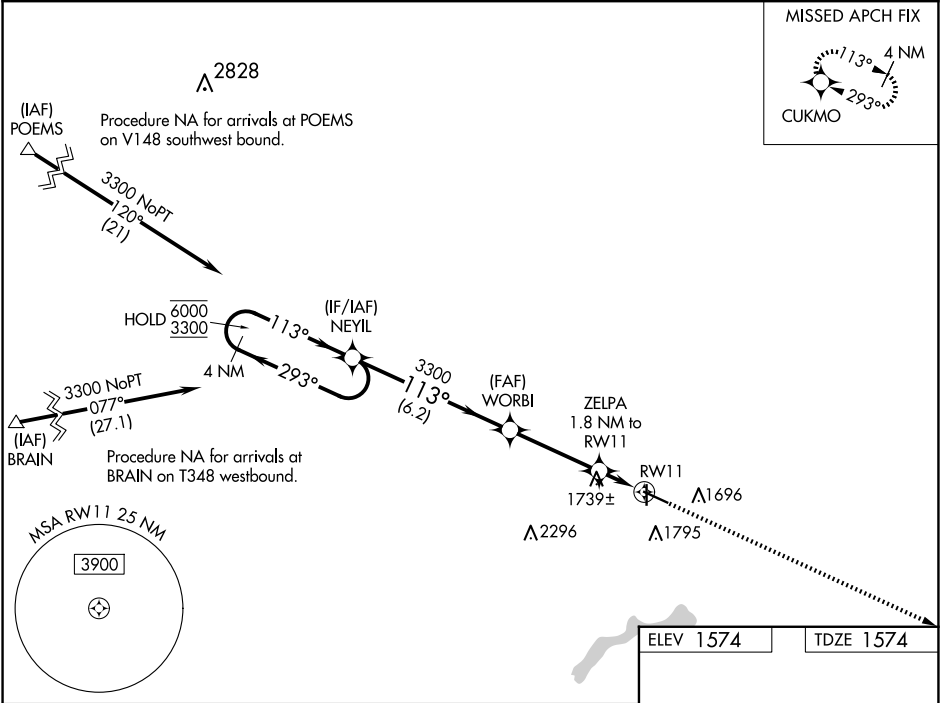
121.075

MINNEAPOLIS CENTER

132.05 317.4

UNICOM

122.8 (CTAF) 0



4 NM Holding Pattern

NEYIL

WORBI

3300

CUKMO

ZELPA 1.8 NM to RW11

1.2 NM to RW11

RW11

2180

GP 3.00°

TCH 42

6.2 NM

3.5 NM

0.6

1.2 NM

CATEGORY	A	B	C	D
LPV DA	1824-1	250 (300-1)		
LNAV/VNAV DA	1826-1	252 (300-1)		
LNAV MDA	2000-1 426 (500-1)	2000-1¼ 426 (500-1¼)		
CIRCLING	2100-1 526 (600-1)	2100-1½ 526 (600-1½)	2320-2½ 746 (800-2½)	

ELEV 1574

TDZE 1574

81

113°

5300 X 100

4200 X 75

36

1629

MIRL Rwy 18-36

HIRL Rwy 11-29

REIL Rws 11, 18, and 36