

LOC I-OTG <b><u>111.7</u></b>	APP CRS <b>293°</b>	Rwy Idg TDZE Apt Elev	<b>5500</b> <b>1570</b> <b>1574</b>
----------------------------------	------------------------	-----------------------------	---

# ILS or LOC RWY 29

DME required for LOC only. RNP APCH-GPS.
--

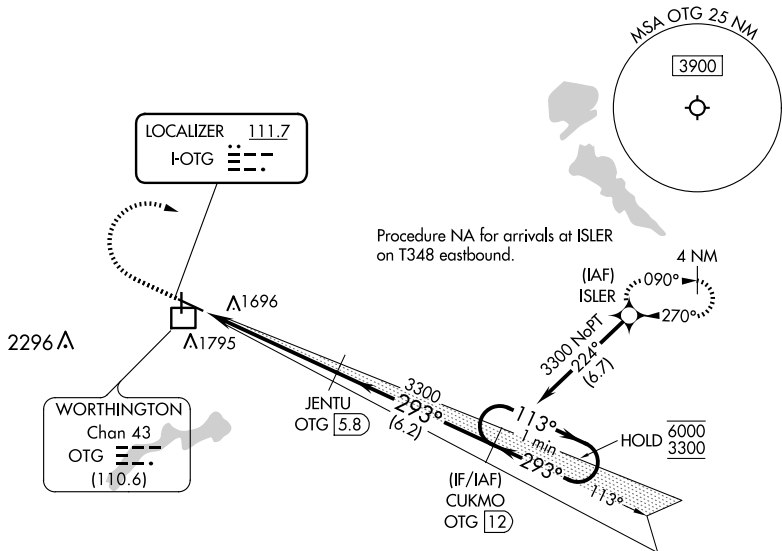
**T** Autopilot coupled approach NA below 1770.

MALSR

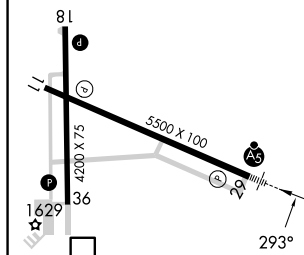


**MISSED APPROACH:** Climb to 2500 then climbing right turn to 3300 direct ISLER and hold.

AWOS-3PT <b>121.075</b>	MINNEAPOLIS CENTER <b>132.05 317.4</b>	UNICOM <b>122.8 (CTAF) 0</b>
----------------------------	---	---------------------------------



ELEV 1574		TDZE 1570
-----------	--	-----------



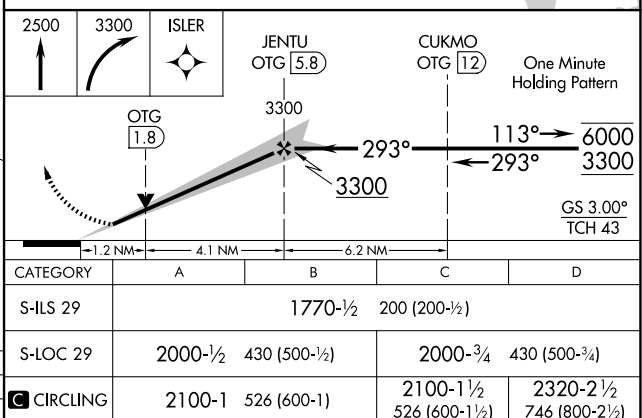
MIRL Rwy 18-36 **L**  
HIRL Rwy 11-29 **L**  
REIL Rwy 11, 18, and 36 **L**

FAF to MAP 5.3 NM

Knots	60	90	120	150	180
Min:Sec	5:18	3:32	2:39	2:07	1:46

WORTHINGTON, MINNESOTA

Amdt 2 27JAN22



WORTHINGTON, MINNESOTA

Amdt 2 27JAN22

43°39'N-95°35'W

WORTHINGTON MUNI (OTG)  
ILS or LOC RWY 29

NC-1, 10 JUL 2025 to 07 AUG 2025