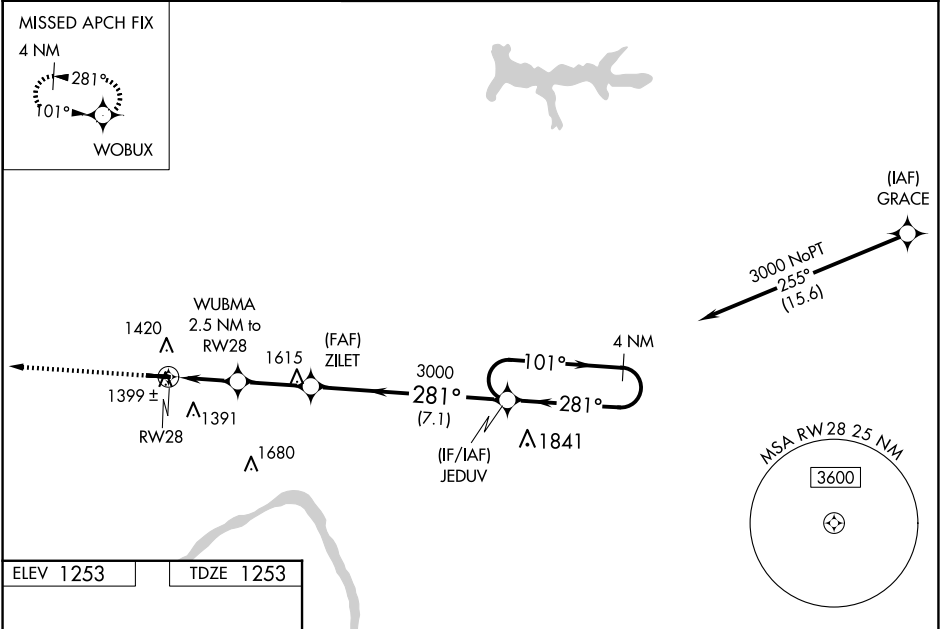


WAAS CH 72621 W28A	APP CRS 281°	Rwy Idg TDZE 1253 Apt Elev 1253
--	------------------------	---

RNAV (GPS) RWY 28

BEAVER COUNTY (BVI)

RNP APCH.			MISSED APPROACH: Climb to 3000 direct WOBUX and hold.	
<div><div></div><div>Baro-VNAV and VDP NA when using Pittsburgh Intl altimeter setting. For uncompensated Baro-VNAV systems, LNAV/VNAV NA below -17°C (2°F) or above 26°C (78°F). When local altimeter setting not received, use Pittsburgh Intl altimeter setting; increase all DA 50 feet; increase all MDAs 60 feet and visibility LNAV Cats C and D ¼ SM. Circling Rwy 28 NA at night. Rwy 28 helicopter visibility reduction below ¾ SM NA.</div></div>				
ATIS 118.35	PITTSBURGH APP CON 124.75 338.2	BEAVER COUNTY TOWER ★ 120.3 (CTAF) 0	GND CON 121.8	CLNC DEL 124.85 (when twr closed)



ELEV 1253		TDZE 1253	
		VGSi and RNAV glidepath not coincident (VGSi Angle 3.00/TCH 43).	
3000 WOBUX		4 NM Holding Pattern	
*LNAV only.		JEDUV	
*1.1 NM to RW28		281° 101° 3000	
RW28		GP 3.10° TCH 60	
1.1 1.4 2.6 NM		7.1 NM	
CATEGORY	A	B	C
LPV DA	1512-1 259 (300-1)		
LNAV/ VNAV DA	1580-1 327 (400-1)		
LNAV MDA	1660-1 407 (500-1)	1660-1½ 407 (500-1½)	
CIRCLING	1720-1 467 (500-1)	1720-1½ 467 (500-1½)	1820-2 567 (600-2)