

WAAS CH 62821 W10A	APP CRS 101°	Rwy Idg TDZE 1237 Apt Elev 1253
--	------------------------	---

RNAV (GPS) RWY 10

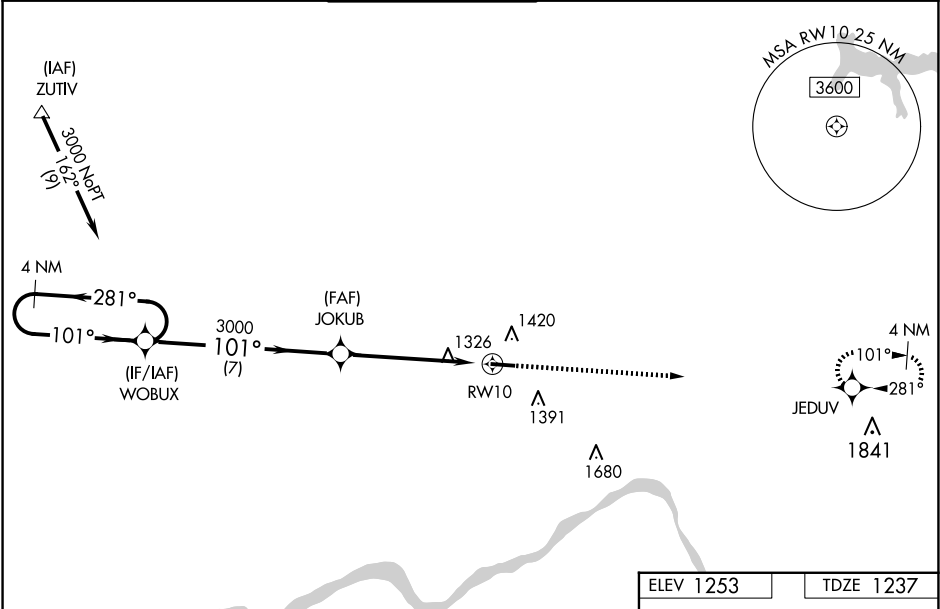
BEAVER COUNTY (BVI)

RNP APCH.

Baro-VNAV and VDP NA when using Pittsburgh Intl altimeter setting. For uncompensated Baro-VNAV systems, LNAV/VNAV NA below -17°C (2°F) or above 36°C (96°F). When local altimeter setting not received, use Pittsburgh Intl altimeter setting; increase all DA 50 feet; increase all MDAs 60 feet and visibility LNAV Cats C and D ½ SM. Circling Rwy 28 NA at night. Rwy 10 helicopter visibility reduction below ¾ SM NA.

MISSED APPROACH: Climb to 3000 direct JEDUV and hold.

ATIS 118.35	PITTSBURGH APP CON 124.75 338.2	BEAVER COUNTY TOWER★ 120.3 (CTAF) 0	GND CON 121.8	CLNC DEL 124.85 (when twr closed)
-----------------------	---	---	-------------------------	--



4 NM Holding Pattern

VGSI and RNAV glidepath not coincident (VGSI Angle 3.00/TCH 42).

3000 JEDUV

*INAV only.

WOBUX JOKUB

3000

*1.1 NM to RWY 10

RWY 10

GP 3.00° TCH 55

7 NM 4.4 NM 1.1 NM

CATEGORY	A	B	C	D
LPV DA	1528-1 290 (300-1)			
LNAV/VNAV DA	1514-1 276 (300-1)			
LNAV MDA	1580-1 342 (400-1)			
CIRCLING	1720-1 467 (500-1)	1720-1½ 467 (500-1½)	1820-2 567 (600-2)	

ELEV 1253 TDZE 1237

MIRL Rwy 10-28 0 REIL Rwy 10 and 28 0