


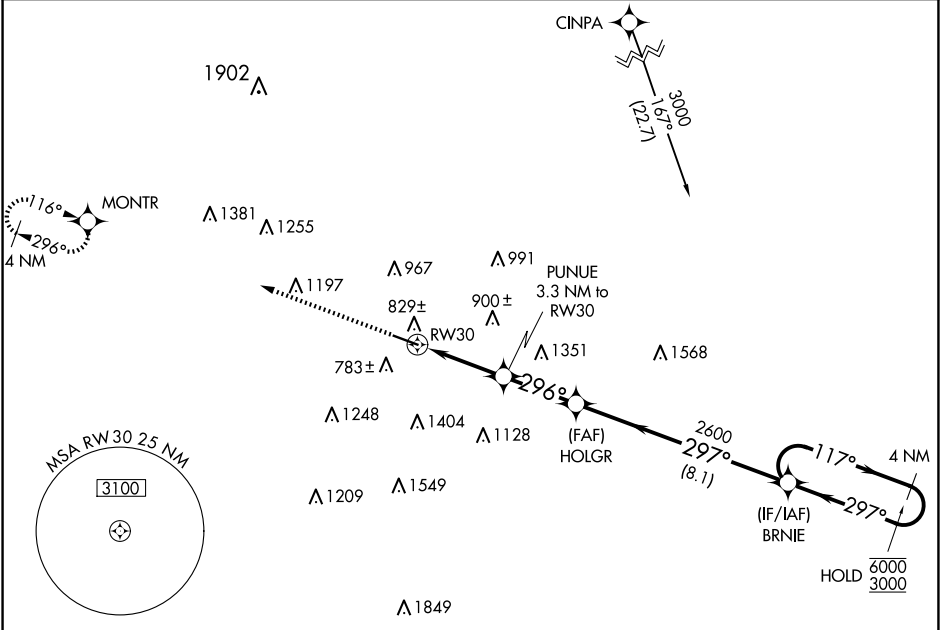


WAAS CH <b>61300</b> <b>W30A</b>	APP CRS <b>296°</b>	Rwy Idg TDZE <b>619</b> Apt Elev <b>632</b>
--	------------------------	---

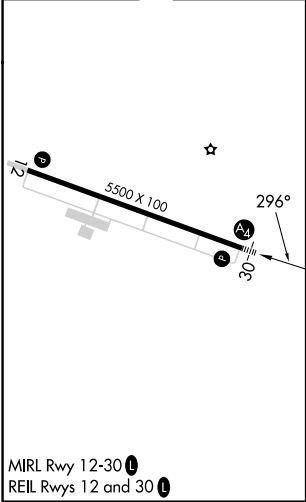
RNAV (GPS) RWY 30

BUTLER COUNTY RGNL/HOGAN FLD (H.A.O)

RNP APCH - GPS.				MALS 	MISSED APPROACH: Climb to 2700 direct MONTR and hold.
 	For uncompensated Baro-VNAV systems, LNAV/VNAV NA below -18°C or above 54°C. Inop table does not apply to LPV.				
ASOS <b>121.425</b>	CINCINNATI APP CON <b>121.0 254.25</b>	CLNC DEL <b>126.25</b>	UNICOM <b>123.05 (CTAF) 0</b>		



ELEV <b>632</b>	TDZE <b>619</b>
-----------------	-----------------



2700 MONTR		4 NM Holding Pattern	
PUNUE 3.3 NM to RW30		HOLGR 2600	
1.3 NM to RW30		BRNIE 2600	
RW30		1700	
1.3		2 NM	2.8 NM
CATEGORY		A	B
LPV DA		819-3/4	200 (200-3/4)
LNAV/VNAV DA		1080-1 1/8	461 (500-1 1/8)
LNAV MDA		1080-3/4 461 (500-3/4)	1080-1 1/8 461 (500-1 1/8)
CIRCLING		1280-1 648 (700-1)	1300-1 3/4 668 (700-1 3/4) 1760-3 1128 (1200-3)