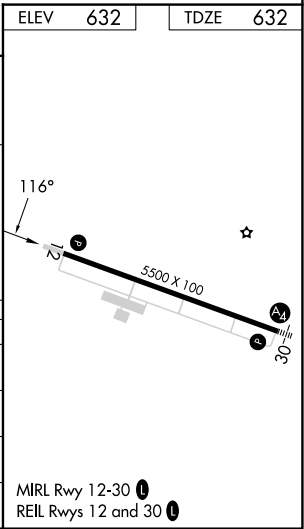
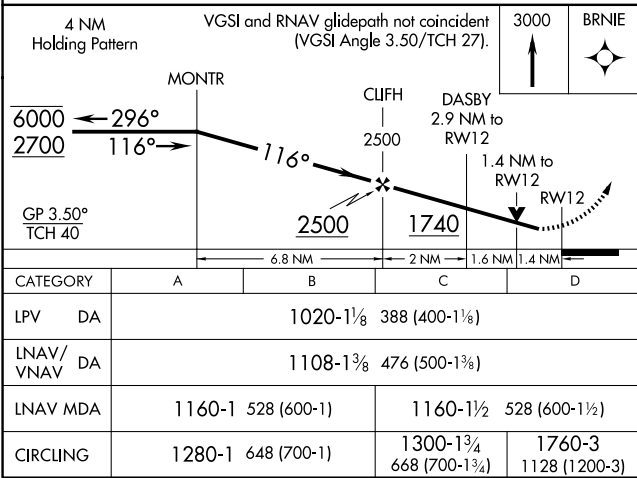
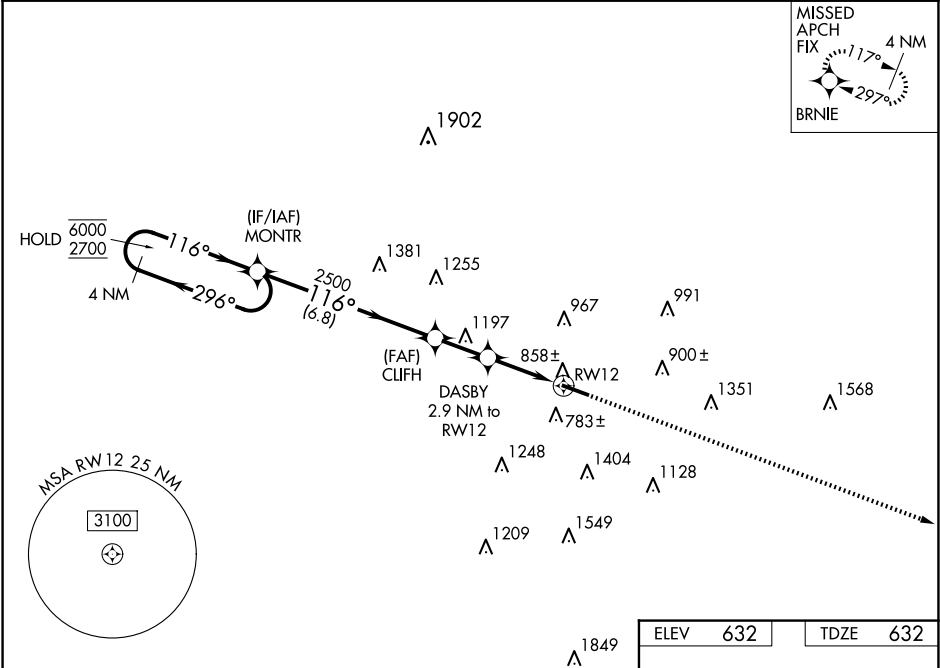


WAAS CH <b>56600</b> <b>W12A</b>	APP CRS <b>116°</b>	Rwy Idg TDZE Apt Elev	<b>5500</b> <b>632</b> <b>632</b>
--	------------------------	-----------------------------	---

RNAV (GPS) RWY 12

BUTLER COUNTY RGNL/HOGAN FLD (HAO)

RNP APCH - GPS.			MISSED APPROACH: Climb to 3000 direct BRNIE and hold.
<div><div>▼</div><div>Rwy 12 helicopter visibility reduction below ¾ SM NA.</div></div> <div><div>▲</div><div>For uncompensated Baro-VNAV systems, LNAV/VNAV NA below -18°C or above 49°C.</div></div>			
ASOS <b>121.425</b>	CINCINNATI APP CON <b>121.0 254.25</b>	CLNC DEL <b>126.25</b>	UNICOM <b>123.05 (CTAF) 0</b>



EC-2, 10 JUL 2025 to 07 AUG 2025

EC-2, 10 JUL 2025 to 07 AUG 2025