

LOC/DME I-RQF

109.75

APP CRS

296°

Rwy Idg

5500

TDZE

619

Chan

34 (Y)

Apt Elev

632

ILS or LOC RWY 30

BUTLER COUNTY RGNL/HOGAN FLD (HAO)

RNP APCH - GPS

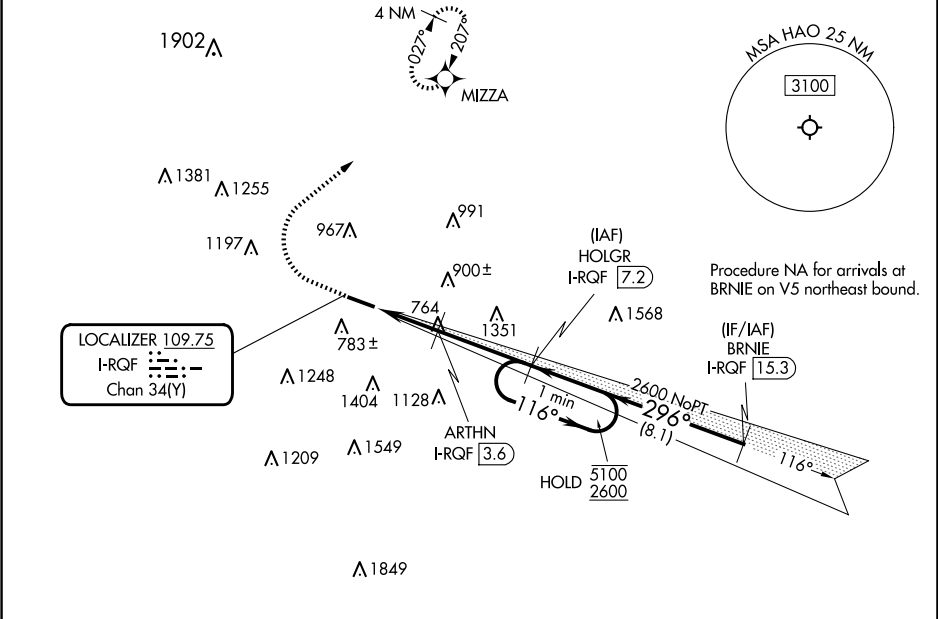
DME required.

MALS

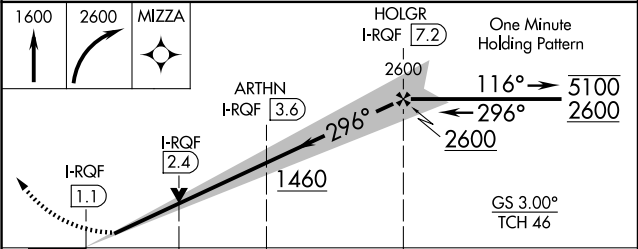
MISSED APPROACH: Climb to 1600 then climbing right turn to 2600 direct MIZZA and hold.

Inop table does not apply to S-ILS 30.

ASOS 121.425	CINCINNATI APP CON 121.0 254.25	CLNC DEL 126.25	UNICOM 123.05 (CTAF)
-----------------	------------------------------------	--------------------	-------------------------



ELEV 632	TDZE 619
----------	----------



CATEGORY	A	B	C	D
S-ILS 30	819-3/4	200 (200-3/4)		
S-LOC 30	1080-3/4 461 (500-3/4)	1080-1 1/8 461 (500-1 1/8)		
CIRCLING	1280-1 648 (700-1)	1300-1 3/4 668 (700-1 3/4)	1760-3 1128 (1200-3)	

