

MINNEAPOLIS DEP CON  
126.5 335.65  
ATIS  
120.625  
CLINC DEL  
121.3  
CLINC DEL  
121.85 (when twr closed)  
ANOKA TOWER★  
132.4

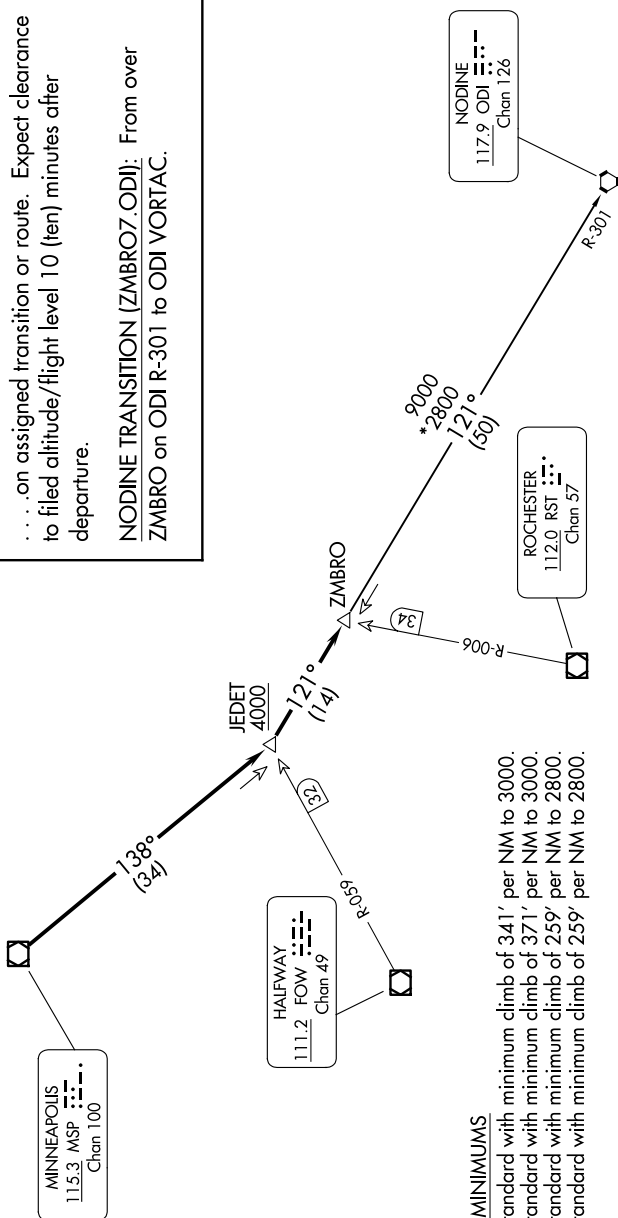
**TOP ALTITUDE:**  
(JETS) 7000/  
(PROPS) 5000

## DEPARTURE ROUTE DESCRIPTION

**TAKEOFF ALL RUNWAYS:** Fly assigned heading and altitude for RADAR vectors to MSP VOR/DME then on MSP R-138 to cross JEDET INT/MSP 34 DME, at or above 4000; then on ODI R-301 to ZMBRO INT/ODI 50 DME, thence . . . .

...on assigned transition or route. Expect clearance to filed altitude/flight level 10 (ten) minutes after departure.

**NODINE TRANSITION (ZMBRO7.ODI):** From over ZMBRO on ODI R-301 to ODI VORTAC.



## TAKEOFF MINIMUMS

Rwy 9: Standard with minimum climb of 341' per NM to 3000.  
 Rwy 18: Standard with minimum climb of 371' per NM to 3000.  
 Rwy 27: Standard with minimum climb of 259' per NM to 2800.  
 Rwy 36: Standard with minimum climb of 259' per NM to 2800.

NOTE: RADAR required.

NOTE: Chart not to scale.