

VORTAC GEP

117.3

Chan 120

APP CRS

084°

Rwy Idg

5000

TDZE

910

Apt Elev

912

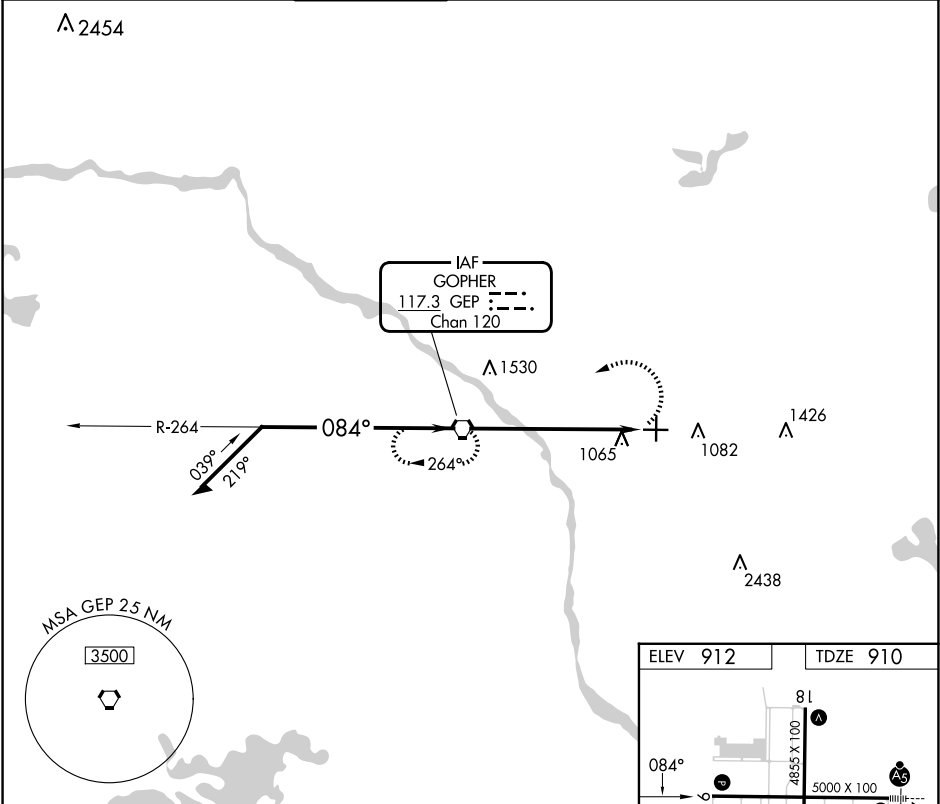
VOR RWY 9

ANOKA COUNTY/BLAINE (JANES FLD) (A.N.E.)

When local altimeter setting not received, use Crystal altimeter setting: increase all MDA 40 feet and increase S-9 visibility Cat C/D ¼ SM and Circling Cat D ¼ SM.  
VDP NA when using Crystal altimeter setting.

MISSED APPROACH: Climbing left turn to 3000 direct GEP VORTAC and hold.

ATIS 120.625	MINNEAPOLIS APP CON 126.5 335.65	ANOKA TOWER* 132.4 (CTAF) 0	GND CON 121.85	CLNC DEL 121.3	CLNC DEL 121.85 (When twr closed)	UNICOM 122.95
-----------------	-------------------------------------	--------------------------------	-------------------	-------------------	---	------------------



VGSI and descent angles not coincident (VGSI Angle 3.00/TCH 25).

Remain within 10 NM

3000

264°

084°

3000

2.97°

TCH 45

5 NM

1.5 NM

3000

GEP

GEP 5

GEP 6.5

ELEV 912

TDZE 910

084°

81

4855 X 100

5000 X 100

271

TWR

36

964

HIRL Rwy 9-27

MIRL Rwy 18-36

REIL Rws 9, 18 and 36

FAF to MAP 6.5 NM

Knots	60	90	120	150	180
Min:Sec	6:30	4:20	3:15	2:36	2:10

CATEGORY	A	B	C	D
S-9	1400-1	490 (500-1)	1400-1⅓	490 (500-1⅓)
CIRCLING	1400-1	488 (500-1)	1460-1½ 548 (600-1½)	1580-2 668 (700-2)