

VOR/DME TVF	APP CRS	Rwy Idg	6304
114.45	312°	TDZE	1114
Chan 91(Y)		Apt Elev	1119

VOR RWY 31

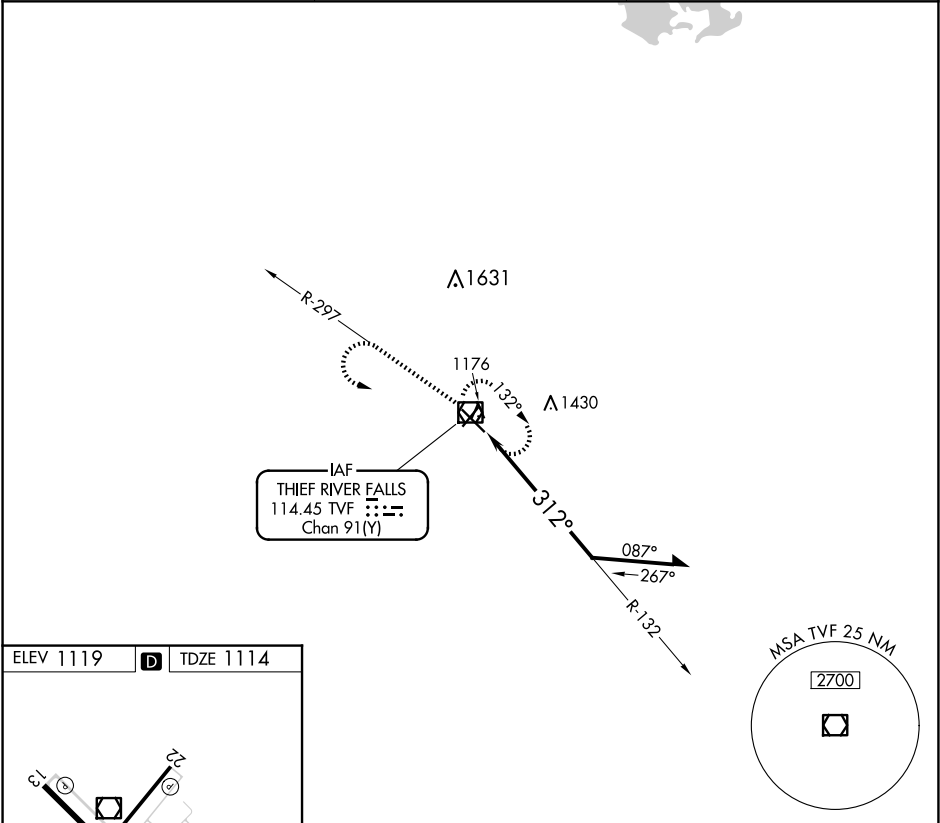
THIEF RIVER FALLS RGNL (TVF)

MALSR

MISSED APPROACH:

Climb to 2700 on TVF R-297 then left turn direct TVF VOR/DME and hold.

AWOS-3PT 119.025	MINNEAPOLIS CENTER 132.15 269.6	UNICOM 122.8 (CTAF) 0
---------------------	------------------------------------	--------------------------



ELEV 1119

D

TDZE 1114

HIRL Rwy 13-31 0

MIRL Rwy 4-22 0

REIL Rwy 4, 13, and 22 0

2700

TVF R-297

TVF

TVF VOR/DME

Remain within 10 NM

132°

312°

2700

CATEGORY	A	B	C	D
S-31	1660-1/2 546 (600-1/2)		1660-1 1/8 546 (600-1 1/8)	
CIRCLING	1660-1 541 (600-1)		1820-2 701 (800-2)	1980-2 3/4 861 (900-2 3/4)

NC-1, 10 JUL 2025 to 07 AUG 2025

NC-1, 10 JUL 2025 to 07 AUG 2025