

WAAS CH 69311 W31A	APP CRS 313°	Rwy Idg TDZE 1114 Apt Elev 1119	6304
--	------------------------	---	-------------

RNAV (GPS) RWY 31

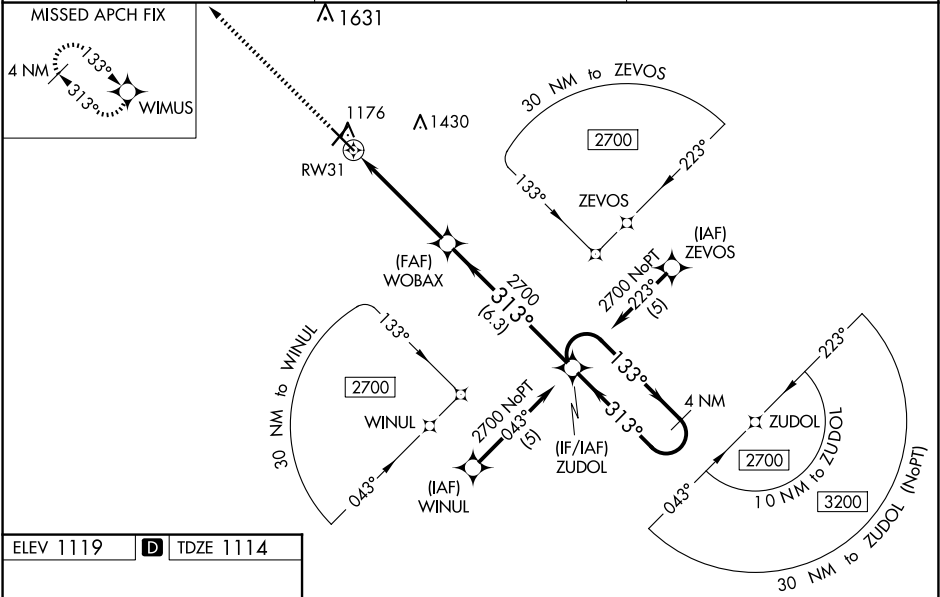
THIEF RIVER FALLS RGNL (TVF)

Baro-VNAV and VDP NA when using Crockston altimeter setting. For uncompensated Baro-VNAV systems, LNAV/VNAV NA below -17°C (2°F) or above 54°C (130°F). DME/DME RNP-0.3 NA. When local altimeter setting not received, use Crockston altimeter setting: increase LPV DA to 1446 feet and all visibilities ½ SM; increase LNAV/VNAV DA to 1510 feet and all visibilities ¾ SM; increase all MDAs 100 feet and visibility Cats C and D ¼ SM. For inoperative MALSR, increase LNAV Cats C/D visibility to 1¾ mile. For inoperative MALSR, when using Crockston altimeter setting, increase LPV all Cats visibility to 1½ mile, LNAV/VNAV all Cats visibility to 1¼ mile, LNAV Cats C/D visibility to 1¾ mile.

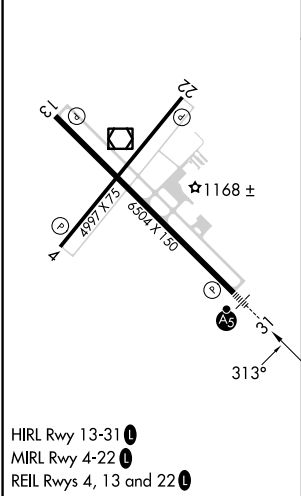
MALSR

MISSED APPROACH:
Climb to 2700 direct WIMUS and hold.

AWOS-3PT 119.025	MINNEAPOLIS CENTER 132.15 269.6	UNICOM 122.8 (CTAF)
----------------------------	---	-------------------------------



ELEV 1119	D	TDZE 1114
-----------	----------	-----------



<div>2700</div> <div>WIMUS</div> <div>* LNAV only</div> <div>1.3 NM to RW31</div> <div>1.3 NM</div> <div>3.5 NM</div> <div>6.3 NM</div> <div>2700</div> <div>WOBAX</div> <div>2700</div> <div>ZUDOL</div> <div>4 NM Holding Pattern</div> <div>313°</div> <div>133°</div> <div>2700</div> <div>GP 3.00°</div> <div>TCH 55</div>				
CATEGORY	A	B	C	D
LPV DA	1364-½		250 (300-½)	
LNAV/VNAV DA	1428-½		314 (400-½)	
LNAV MDA	1580-½ 466 (500-½)		1580-1 466 (500-1)	
CIRCLING	1580-1 461 (500-1)		1820-2 701 (800-2)	1980-2¾ 861 (900-2¾)