

WAAS CH <b>72711</b> <b>W13A</b>	APP CRS <b>133°</b>	Rwy Idg TDZE <b>1115</b> Apt Elev <b>1119</b>	<b>6504</b>
--	------------------------	---	-------------

RNAV (GPS) RWY 13

THIEF RIVER FALLS RGNL (TVF)

▼

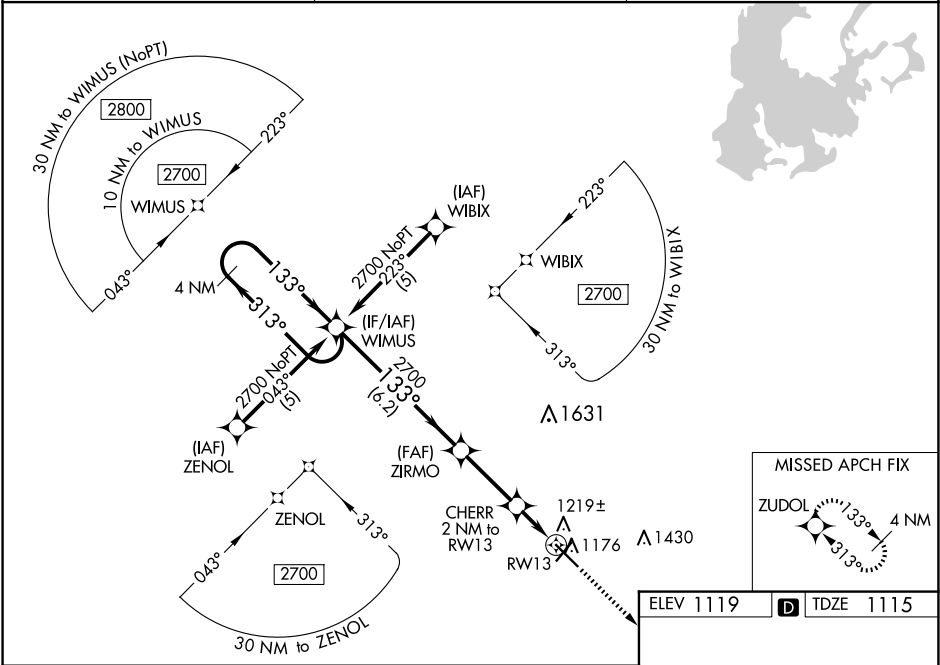
Baro-VNAV and VDP NA when using Crookston altimeter setting. For uncompensated Baro-VNAV systems, LNAV/VNAV NA below -17°C (2°F) or above 54°C (130°F). DME/DME RNP-0.3 NA.

⚠

When local altimeter setting not received, use Crookston altimeter setting: increase LPV DA to 1447 feet and all visibilities ½ SM; increase LNAV/VNAV DA to 1518 feet and all visibilities ¼ SM; increase all MDAs 100 feet and visibility Cats C and D ¾ SM.

MISSED APPROACH:  
Climb to 2700 direct  
ZUDOL and hold.

AWOS-3PT <b>119.025</b>	MINNEAPOLIS CENTER <b>132.15 269.6</b>	UNICOM <b>122.8 (CTAF) ①</b>
----------------------------	---	---------------------------------



4 NM Holding Pattern		WIMUS	ZIRMO	CHERR 2 NM to RW13	2700	ZUDOL
GP 3.00° TCH 40°		2700	2700	*1780	*1 NM to RW13	RW13
6.2 NM		2.8 NM		1 NM	1 NM	
CATEGORY	A	B	C	D		
LPV DA	1365-1		250 (300-1)			
LNAV/VNAV DA	1436-1¼		321 (400-1¼)			
LNAV MDA	1480-1		365 (400-1)		1480-1¼ 365 (400-1¼)	
CIRCLING	1540-1 421 (500-1)	1580-1 461 (500-1)	1820-2 701 (800-2)	1980-2¾ 861 (900-2¾)		
THIEF RIVER FALLS, MINNESOTA		THIEF RIVER FALLS RGNL (TVF)		HIRL Rwy 13-31 ①		
Orig-B 23APR20		48°04'N-96°11'W		MRL Rwy 4-22 ①		
				REIL Rws 4, 13 and 22 ①		

NC-1, 10 JUL 2025 to 07 AUG 2025

NC-1, 10 JUL 2025 to 07 AUG 2025