

LOC I-HYZ <b><u>110.5</u></b>	APP CRS <b>313°</b>	Rwy Idg TDZE Apt Elev	<b>6304</b> <b>1114</b> <b>1119</b>
----------------------------------	------------------------	-----------------------------	---

ILS or LOC RWY 31  
THIEF RIVER FALLS RGNL(TVF)

DME required for procedure entry. DME required.

MALSR

**MISSED APPROACH:** Climb to 2700 then left turn direct TVF VOR/DME and hold.

**T** For inop ALS, increase S-LOC 31 Cat C/D visibility to 1 SM.

**A** DME from TVF VOR/DME. Simultaneous reception of I-HYZ and TVF DME required.

AWOS-3PT

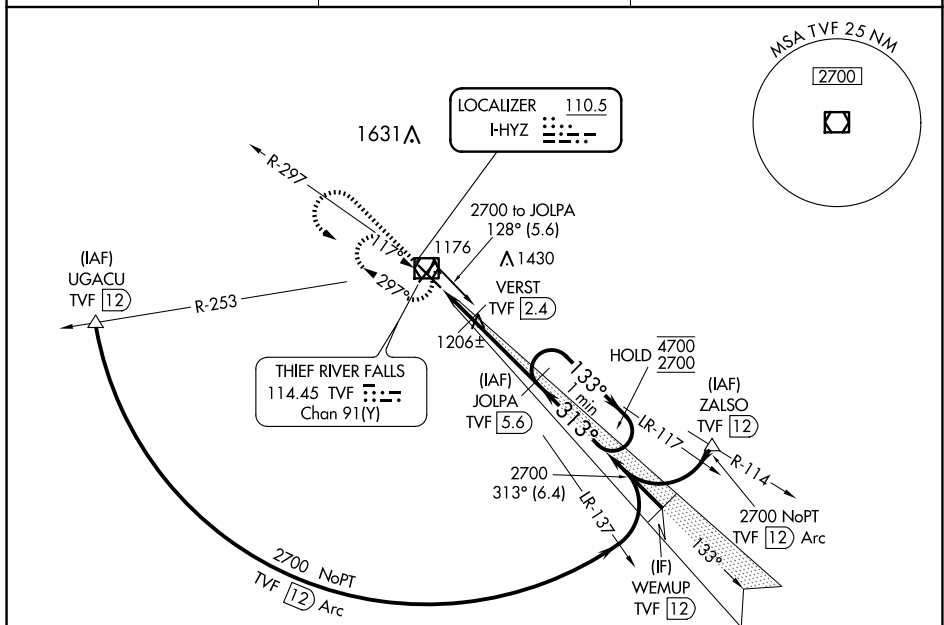
119.025

MINNEAPOLIS CENTER

132.15 269.6

UN|COM

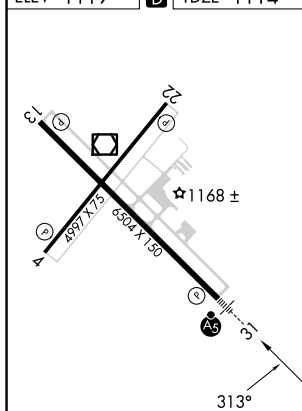
**122.8 (CTAF) L**



ELEV 1119		TDZE 1114
-----------	---	-----------

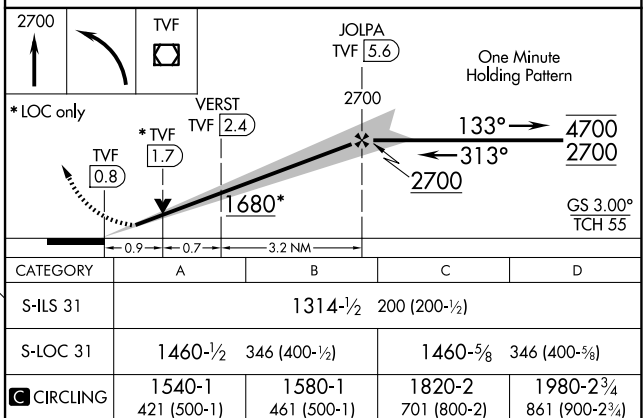
**P**

E 1114

HIRL Rwy 13-31 **L**

MIRL Rwy 4-22 (L)

RFIL Rwy 4, 13 and 22 (L)



THIEF RIVER FALLS, MINNESOTA

Amdt 5A 25APR19

48°04'N-96°11'W

THIEF RIVER FALLS RGNL (TVF)

ILS or LOC RWY 31