

VORTAC BYP	APP CRS	Rwy Idg	N/A
114.6	280°	TDZE	N/A
Chan 93		Apt Elev	746

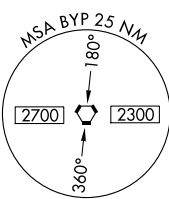
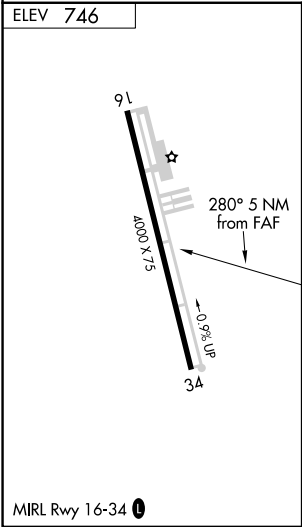
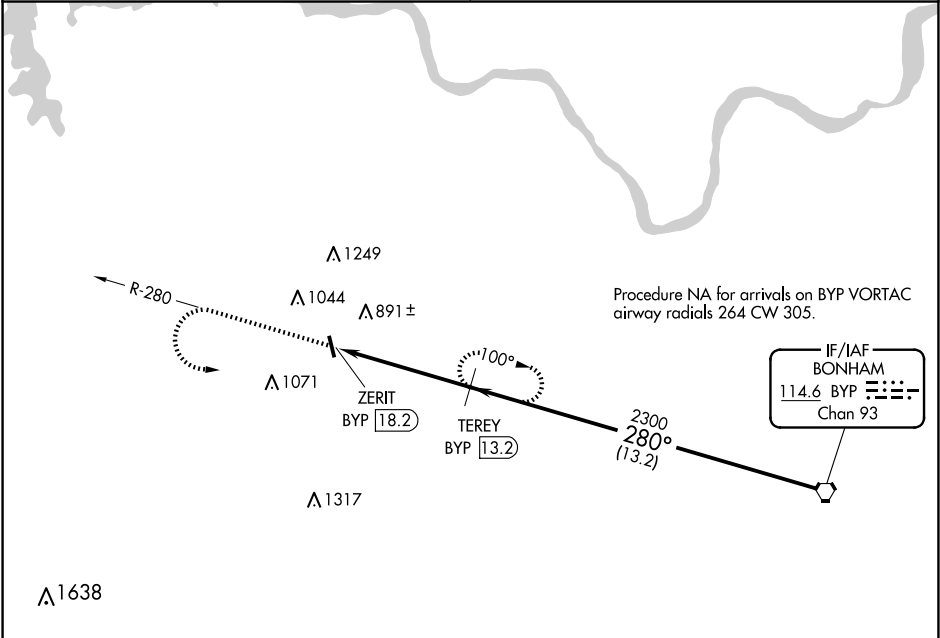
VOR/DME-A
SHERMAN MUNI (SWI)

▼
▲ NA
Use Sherman/Denison altimeter setting, when not received, use Dallas Love Fld altimeter setting and increase all MDA 140 feet, increase visibility Cat B ¼ mile, Cat C ½ mile, and Cat D ¾ mile. Procedure NA at night.
Helicopter visibility reduction below 1 SM NA.

MISSED APPROACH: Climb to 2300, then climbing left turn to 2400 on BYP R-280 to TEREY/13.2 DME and hold.

FORT WORTH CENTER
124.75 323.0

UNICOM
122.8 (CTAF) 0



<div><div>2300</div><div>↑</div></div>		<div><div>2400</div><div>BYP</div><div>R-280</div></div>	<div><div>TEREY</div><div>BYP</div><div>13.2</div></div>	<div><div>TEREY</div><div>BYP</div><div>13.2</div></div>	<div><div>BYP</div><div>VORTAC</div></div>
		<div><div>ZERIT</div><div>BYP</div><div>18.2</div></div>	<div><div>✕</div></div>	<div><div>2300</div><div>←</div><div>280°</div><div>2300</div></div>	<div><div>2300</div></div>
		<div><div>5 NM</div></div>	<div><div>13.2 NM</div></div>		
CATEGORY	A	B	C	D	
<div><div>CIRCLING</div></div>	<div><div>1300-1</div><div>554 (600-1)</div></div>	<div><div>1420-1</div><div>674 (700-1)</div></div>	<div><div>1620-2½</div><div>874 (900-2½)</div></div>	<div><div>1620-2¾</div><div>874 (900-2¾)</div></div>	