

WAAS CH 56519 W24A	APP CRS 243°	Rwy Ldg TDZE Apt Elev	5013 396 398
--	------------------------	-----------------------------	---

RNAV (GPS) RWY 24
HARRISBURG-RALEIGH (HSB)

RNP APCH.

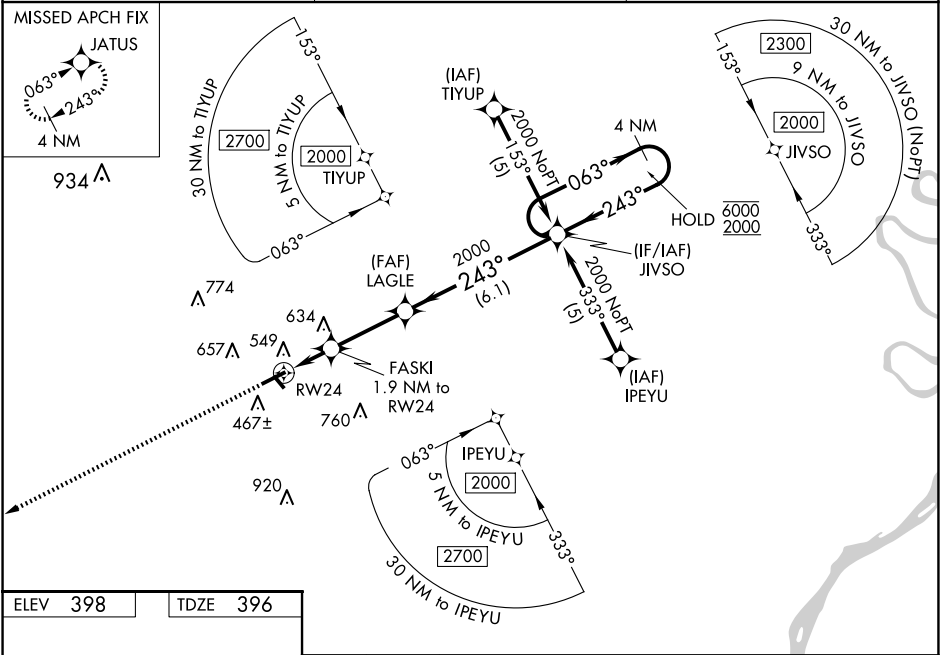
▼

▲

For uncompensated Baro-VNAV systems, LNAV/VNAV NA below -15°C or above 54°C.
Rwy 24 helicopter visibility reduction below ¾ SM NA.

MISSED APPROACH:
Climb to 2700 direct
JATUS and hold.

AWOS-3PT 135.925	KANSAS CITY CENTER 127.475 346.275	UNICOM 122.8 (CTAF) 0
----------------------------	--	---------------------------------



ELEV 398 TDZE 396

2700 JATUS

FASKI 1.9 NM to RW24

LAGLE 2000

JIVSO 4 NM Holding Pattern

*LNAV only

*1.4 NM to RW24

*1020

GP 3.00° TCH 35

CATEGORY	A	B	C	D
LPV DA	697-1 301 (300-1)			
LNAV/VNAV DA	859-1¾ 463 (500-1¾)			
LNAV MDA	880-1 484 (500-1)	880-1¼ 484 (500-1¼)	880-1½ 484 (500-1½)	880-1½ 484 (500-1½)
CIRCLING	900-1 502 (600-1)	1020-1 622 (700-1)	1020-1¾ 622 (700-1¾)	1080-2¼ 682 (700-2¼)

EC-3, 10 JUL 2025 to 07 AUG 2025

EC-3, 10 JUL 2025 to 07 AUG 2025